

附表 1 本研究 280 个样本信息

Appendix table 1 Details of material used in the study

Species	Voucher/Collector/Locality	GenBank No.			
		<i>rbcL</i>	<i>trnL-F</i>	<i>psbA-trnH</i>	<i>rps4</i>
<i>Dennstaedtia appendiculata</i>	ZhangXC5294/Zhang Xianchun /Rikaze, Tibet, China	MK051807	MK052060	MK052322	MK052598
<i>D. hirsuta</i>	SG159/Shang Hui, Gu Yufeng /Emeifeng, Taining, Fujian, China	MK051800	MK052053	MK052315	MK052591
<i>D. scabra</i>	YYH11627/Yan Yuehong, He Zuxia /Nantou, Taiwan, China	MK051705	MK051958	MK052209	MK052489
<i>D. scabra</i>	YYH12150/Yan Yuehong, Shang Hui, Gu Yufeng/Daweishan, Pingbian, Yunnan, China	MH289649	MH289713	MK052210	MK052490
<i>D. wilfordii</i>	JSL2982/Wei Hongjin/Yuexi, Anhui, China	MK051796	MK052049	MK052311	MK052588
<i>Microlepia ampla</i> ^{*^}	WZS003/Wei Hongjin/Wuzhishan, Hainan, China	MK051603	MK051946	MK052196	MK052476
<i>M. ampla</i> ^{*^}	SG2830/Shang Hui, Wei Hongjin, Shu Jiangping, Huang Kerui/Yinggeling, Qiongzong, Hainan, China	MK051601	MK051912	MK052162	MK052442
<i>M. ampla</i> [^]	HNS044/Yan Yuehong/Shaxian, Hainan, China	MK051598	MK051897	MK052147	MK052427
<i>M. boluoensis</i> [*]	WYD623/Yan Yuehong, Wei Hongjin, Wang Ying, Zhu Xiaofeng/Luofushan, Boluo, Guangdong, China	MK051669	MK051918	MK052168	MK052448
<i>M. boluoensis</i> [*]	WYD625/Yan Yuehong, Wei Hongjin, Wang Ying, Zhu Xiaofeng/Luofushan, Boluo, Guangdong, China	MK051670	MK051919	MK052169	MK052449
<i>M. boluoensis</i> [*]	WYD626/Yan Yuehong, Wei Hongjin, Wang Ying, Zhu Xiaofeng/Luofushan, Boluo, Guangdong, China	MK051671	MK051920	MK052170	MK052450
<i>M. boluoensis</i> [*]	WYD627/Yan Yuehong, Wei Hongjin, Wang Ying, Zhu Xiaofeng/Luofushan, Boluo, Guangdong, China	MK051672	MK051921	MK052171	MK052451
<i>M. boluoensis</i> [*]	WYD629/Yan Yuehong, Wei Hongjin, Wang Ying, Zhu Xiaofeng/Luofushan, Boluo, Guangdong, China	MK051673	MK051922	MK052172	MK052452
<i>M. calvescens</i>	ZXL09868/Zhou Xile, Yan Yuehong, Du Cheng/Doi Suthep-Pui National Park, Chiang Mai, Thailand	MK051793	MK052046	MK052308	MK052585
<i>M. calvescens</i> [^]	SG2857/Shang Hui, Wei Hongjin, Shu Jiangping, Huang Kerui/Jianfengling, Ledong, Hainan, China	MK051612	MK051996	MK052257	MK052537
<i>M. chrysocarpa</i>	WYG197/Wei Hongjin, Wang Ying, Zhang Jiubing/Maolan, Libo, Guizhou, China	MK051683	MK051932	MK052182	MK052462
<i>M. chrysocarpa</i>	WYG202/Wei Hongjin, Wang Ying, Zhang Jiubing/Maolan, Libo, Guizhou, China	MK051685	MK051934	MK052184	MK052464
<i>M. chrysocarpa</i>	WYG278/Wei Hongjin, Wang Ying, Zhang Jiubing/Maolan, Libo, Guizhou, China	MK051691	MK051940	MK052190	MK052470
<i>M. chrysocarpa</i>	WYG201/Wei Hongjin, Wang Ying, Zhang Jiubing/Maolan, Libo, Guizhou, China	MK051684	MK051933	MK052183	MK052463
<i>M. chrysocarpa</i>	WYG269/Wei Hongjin, Wang Ying, Zhang Jiubing/Maolan, Libo, Guizhou, China	MK051690	MK051939	MK052189	MK052469
<i>M. chrysocarpa</i>	WYG292/Wei Hongjin, Wang Ying, Zhang Jiubing/Maolan, Libo, Guizhou, China	MK051692	MK051941	MK052191	MK052471
<i>M. chrysocarpa</i>	ZXC7015/Zhang Xianchun, Guo Zhiyou/Libo, Guizhou, China	MK051808	MK052061	MK052323	MK052599

<i>M. communis</i>	YYH13433/Yan Yuehong, Wei Hongjin, Wang Ying/Daqingshan, Longzhou, Guangxi, China	MK051638	MK051882	MK052132	MK052412
<i>M. communis</i>	SG2621/Shang Hui/Bulangshan, Menghai, Yunnan, China	MK051803	MK052056	MK052318	MK052594
<i>M. communis</i>	ZXL5761/Zhou Xile, Zhang Jiubing /Jinghong, Yunnan, China	MK051821	—	MK052351	MK052627
<i>M. communis</i>	SG2624/Shang Hui/Bulangshan, Menghai, Yunnan, China	MK051804	MK052057	MK052319	MK052595
<i>M. communis</i>	YYH12367/Yan Yuehong, Shang Hui, Gu Yufeng/Malipo, Yunnan, China	MK051835	MK052096	MK052365	MK052641
<i>M. crassa</i>	STET2352/Li Zhongyang/Motuo, Tibet, China	MK051799	MK052052	MK052314	MK052590
<i>M. crenata</i>	ZXL09783/Zhou Xile, Yan Yuehong, Du Cheng/Kaeng krachan national park, Thailand	MK051788	MK052041	MK052303	MK052580
<i>M. crenata</i>	ZXL09785/Zhou Xile, Yan Yuehong, Du Cheng/Kaeng krachan national park, Thailand	MK051789	MK052042	MK052304	MK052581
<i>M. crenata</i>	ZXL09788/Zhou Xile, Yan Yuehong, Du Cheng/Kaeng krachan national park, Thailand	MK051790	MK052043	MK052305	MK052582
<i>M. crenata</i>	ZXL09794/Zhou Xile, Yan Yuehong, Du Cheng/Kaeng krachan national park, Thailand	MK051791	MK052044	MK052306	MK052583
<i>M. crenata</i>	ZXL09872/Zhou Xile, Yan Yuehong, Du Cheng/Doi Suthep-Pui National Park, Chiang Mai, Thailand	MK051700	MK051953	MK052203	MK052483
<i>M. crenata</i>	ZXL09873/Zhou Xile, Yan Yuehong, Du Cheng/Doi Suthep-Pui National Park, Chiang Mai, Thailand	MK051701	MK051954	MK052204	MK052484
<i>M. crenata</i>	ZXL09779/Zhou Xile, Yan Yuehong, Du Cheng/Kaeng krachan national park, Thailand	MK051787	MK052040	MK052302	MK052579
<i>M. firma</i>	ZXL5924/Zhou Xile, Yan Yuehong, Wang Ying, Zhang Jiubing/Baihualing, Baoshan, Yunnan, China	—	MK052066	MK052328	MK052604
<i>M. firma</i>	ZXL5925/Zhou Xile, Yan Yuehong, Wang Ying, Zhang Jiubing/Baihualing, Baoshan, Yunnan, China	MK051811	MK052067	MK052329	MK052605
<i>M. firma</i>	ZXL6882/Xiang Jianying/Yingjiang, Yunnan, China	MK051812	MK052069	MK052331	MK052607
<i>M. firma</i>	ZXL6895/Zhou Xile, Yan Yuehong, Wang Ying, Zhang Jiubing/Mangshi, Yunnan, China	MK051813	MK052070	MK052332	MK052608
<i>M. hancei</i>	YanYH13663/Yan Yuehong, Shang Hui/Nankunshan, Longmen, Guangdong, China	MK051640	MK051884	MK052134	MK052414
<i>M. hancei</i>	WYG133/Wei Hongjin, Wang Ying, Zhang Jiubing/Rongjiang, Guizhou, China	MK051679	MK051928	MK052178	MK052458
<i>M. hancei</i>	YYH13431/Yan Yuehong, Wei Hongjin, Wang Ying/Daqingshan, Longzhou, Guangxi, China	MK051723	MK051975	MK052232	MK052512
<i>M. hancei</i>	DRS004/Wei Hongjin, Gu Yufeng, Zhu Xiaofeng/Darongshan, Beiliu, Guangxi, China	MK051736	MK051984	MK052245	MK052525
<i>M. hancei</i>	YanYH13703/Yan Yuehong, Shang Hui/Nankunshan, Longmen, Guangdong, China	MK051642	MK051886	MK052136	MK052416
<i>M. hancei</i>	YYH12433/Yan Yuehong/Shimentai, Yingde, Guangdong, China	MK051716	MK051969	MK052225	MK052505
<i>M. hancei</i>	GBJ02750/Gu Yufeng/Langqidao, Fuzhou, Fujian, China	MK051649	MK051893	MK052143	MK052423
<i>M. hancei</i>	YYH12434/Yan Yuehong/Shimentai, Yingde, Guangdong, China	MK051717	MK051970	MK052226	MK052506

<i>M. hancei</i>	SG258/Shang Hui, Gu Yufeng /Guifeng, Yiyang, Jiangxi, China	MK051661	MK051908	MK052158	MK052438
<i>M. hancei</i>	HNS052/Yan Yuehong/Haikou, Hainan, China	MK051741	MK051989	MK052250	MK052530
<i>M. hancei</i>	WYD610/Yan Yuehong, Wei Hongjin, Wang Ying, Zhu Xiaofeng/Dawuling, Xinyi, Guangdong, China	MK051668	MK051917	MK052167	MK052447
<i>M. hancei</i>	YYH13430/Yan Yuehong, Wei Hongjin, Wang Ying/Daqingshan, Longzhou, Guangxi, China	MK051722	MK051974	MK052231	MK052511
<i>M. hancei</i>	WYD011/Yan Yuehong, Wei Hongjin, Wang Ying, Zhu Xiaofeng/Dinghu shan, Zhaoqing, Guangdong, China	MK051666	MK051915	MK052165	MK052445
<i>M. hancei</i>	JSL-TJ 075/Wei Hongjin/Tianjingshan, Ruyuan, Guangdong, China	MK051746	MK051997	MK052258	MK052538
<i>M. hancei</i>	YYH12415/Yan Yuehong/Shimentai, Yingde, Guangdong, China	MK051714	MK051967	MK052223	MK052503
<i>M. hancei</i>	WYD024/Yan Yuehong, Wei Hongjin, Wang Ying, Zhu Xiaofeng/Dinghu shan, Zhaoqing, Guangdong, China	MK051750	MK052001	MK052262	MK052542
<i>M. hancei</i>	WZS007/Wei Hongjin/Wanning, Hainan, China	MK051697	MK051948	MK052198	MK052478
<i>M. hancei</i>	HNS014/Yan Yuehong/Wuzhishan, Hainan, China	MK051737	MK051985	MK052246	MK052526
<i>M. hancei</i>	JSL-TJ 084/Wei Hongjin/Tianjingshan, Ruyuan, Guangdong, China	MK051748	MK051999	MK052260	MK052540
<i>M. hancei</i>	WYD100/Yan Yuehong, Wei Hongjin, Wang Ying, Zhu Xiaofeng/Dinghu shan, Zhaoqing, Guangdong, China	MK051756	MK052007	MK052268	MK052548
<i>M. hancei</i>	SG306/Shang Hui, Gu Yufeng/Long hu, Yingtan, Jiangxi, China	MK051662	MK051909	MK052159	MK052439
<i>M. hancei</i>	WYG141/Wei Hongjin, Wang Ying, Zhang Jiubing/Rongjiang, Guizhou, China	MK051680	MK051929	MK052179	MK052459
<i>M. hancei</i>	YYH11605/Yan Yuehong , He Zuxia /Yanmingshan, Taibei, Taiwan, China	MK051708	MK051961	MK052213	MK052493
<i>M. hancei</i>	YYH13483/Yan Yuehong, Wei Hongjin, Wang Ying/Fangchenggang, Guangxi, China	MK051725	MK051977	MK052234	MK052514
<i>M. hancei</i>	YYH13485/Yan Yuehong, Wei Hongjin, Wang Ying/Shiwandashan, Shangsi, Guangxi, China	MK051726	MK051978	MK052235	MK052515
<i>M. hancei</i>	WZS005/Wei Hongjin/Wuzhishan, Hainan, China	MK051851	MK052107	MK052382	MK052658
<i>M. hancei</i>	WYD054/Yan Yuehong, Wei Hongjin, Wang Ying, Zhu Xiaofeng/Dinghu shan, Zhaoqing, Guangdong, China	MK051854	MK052109	MK052385	MK052661
<i>M. hancei</i>	YYH11643/Yan Yuehong , He Zuxia /Nantou, Taiwan, China	MK051711	-	MK052216	MK052496
<i>M. hancei</i>	YYH12416/Yan Yuehong /Shimentai, Yingde, Guangdong, China	MK051715	MK051968	MK052224	MK052504
<i>M. hancei</i> [^]	GBJ02762/Gu Yufeng/Langqidao, Fuzhou, Fujian, China	MK051597	MK051894	MK052144	MK052424
<i>M. hancei</i> [^]	WZW00130/Gu Yufeng/Chuanshidao, Lianjiang, Fuzhou, Fujian, China	MK051604	MK051949	MK052199	MK052479
<i>M. hancei</i> [^]	SG364/Shang Hui, Gu Yufeng /Meiling, Nanchang, Jiangxi, China	MK051611	MK051995	MK052256	MK052536
<i>M. hancei</i> [^]	YYH11624/Yan Yuehong He Zuxia /Lianhuachi, Nantou, Taiwan, China	MK051629	MK052106	MK052375	MK052651
<i>M. hancei</i> [^]	YYH12334/Yan Yuehong, Shang Hui, Gu Yufeng/Laoshan, Malipo, Yunnan, China	MK051608	-	MK052219	MK052499
<i>M. hancei</i> [^]	YYH12335/Yan Yuehong, Shang Hui, Gu Yufeng/Laoshan, Malipo, Yunnan, China	MK051609	-	MK052220	MK052500

<i>M. hancei</i> [^]	WYG320/Wei Hongjin, Wang Ying, Zhang Jiubing/Luodian, Guizhou, China	MK051602	MK051943	MK052193	MK052473
<i>M. herbacea</i>	ZXL09877/Zhou Xile, Yan Yuehong, Du Cheng/Doi Suthep-Pui National Park, Chiang Mai, Thailand	MK051794	MK052047	MK052309	MK052586
<i>M. herbacea</i>	ZXL09874/Zhou Xile, Yan Yuehong, Du Cheng/Doi Suthep-Pui National Park, Chiang Mai, Thailand	MK051853	–	MK052384	MK052660
<i>M. herbacea</i> [^]	ZXL09793/Zhou Xile, Yan Yuehong, Du Cheng/Kaeng krachan national park, Thailand	MK051605	MK051952	MK052202	MK052482
<i>M. hookeriana</i>	SG1721/Yan Yuehong, Shang Hui /Malaysia	MK051866	–	MK052397	MK052671
<i>M. marginata</i>	WYG156/Wei Hongjin, Wang Ying, Zhang Jiubing/Jinping, Guizhou, China	MK051771	MK052024	MK052286	MK052563
<i>M. hookeriana</i>	ZXL5886/Zhou Xile, Zhang Jiubing /Pingbian, Yunnan, China	MK051810	MK052064	MK052326	MK052602
<i>M. hookeriana</i>	WYD030/Yan Yuehong, Wei Hongjin, Wang Ying, Zhu Xiaofeng/Dinghu shan, Zhaoqing, Guangdong, China	MK051703	MK051956	MK052206	MK052486
<i>M. hookeriana</i>	WYD059/Yan Yuehong, Wei Hongjin, Wang Ying, Zhu Xiaofeng/Dinghu shan, Zhaoqing, Guangdong, China	MK051704	MK051957	MK052207	MK052487
<i>M. hookeriana</i>	WYD218/Yan Yuehong, Wei Hongjin, Wang Ying, Zhu Xiaofeng/Fengkai, Guangdong, China	MH289650	MH289714	MK052208	MK052488
<i>M. hookeriana</i>	13195/Yan Yuehong, Qi Xinping, Shen Hui/Bawangling, Changjiang, Hainan, China	MK051702	MK051955	MK052205	MK052485
<i>M. hookeriana</i>	YYH11610/Yan Yuehong, He Zuxia /Yanmingshan, Taibei, Taiwan, China	MK051844	MK052105	MK052374	MK052650
<i>M. hookeriana</i>	WYG233/Wei Hongjin, Wang Ying, Zhang Jiubing/Libo, Guizhou, China	MK051688	MK051937	MK052187	MK052467
<i>M. khasiyana</i> [^]	ZXL5742/Zhou Xile, Zhang Jiubing /Jinghong, Yunnan, China	MK051616	MK052063	MK052325	MK052601
<i>M. khasiyana</i> [^]	ZXL7183/Zhou Xile, Yan Yuehong, Wang Ying, Zhang Jiubing/Baihualing, Baoshan, Yunnan, China	MK051626	MK052086	MK052348	MK052624
<i>M. khasiyana</i> [^]	ZXL7194/Zhou Xile, Yan Yuehong, Wang Ying, Zhang Jiubing/Baihualing, Baoshan, Yunnan, China	MK051627	MK052087	MK052349	MK052625
<i>M. khasiyana</i> [^]	ZXL7004/Zhou Xile, Yan Yuehong, Wang Ying, Zhang Jiubing/Yingjiang, Yunnan, China	MK051624	MK052076	MK052338	MK052614
<i>M. khasiyana</i> [^]	ZXL7005/Zhou Xile, Yan Yuehong, Wang Ying, Zhang Jiubing/Yingjiang, Yunnan, China	MK051625	MK052077	MK052339	MK052615
<i>M. krameri</i>	WYG231/Wei Hongjin, Wang Ying, Zhang Jiubing/Libo, Guizhou, China	MK051779	MK052032	MK052294	MK052571
<i>M. krameri</i>	GBJ02946/Gu Yufeng/Langqidao, Fuzhou, Fujian, China	MK051839	MK052100	MK052369	MK052645
<i>M. krameri</i> [^]	YYH11607/Yan Yuehong He Zuxia /Yanmingshan, Taibei, Taiwan, China	MK051595	MK051873	MK052123	MK052403
<i>M. kurzii</i>	SG1946/Shang Hui, Luo Junjie /Yingjiang, Yunna, China	MK051868	–	MK052399	MK052673
<i>M. kurzii</i>	YYH12098/Yan Yuehong, Shang Hui, Gu Yufeng/Xishuangbanna, Mengna, Yunnan, China	MK051631	MK051874	MK052124	MK052404
<i>M. kurzii</i>	ZXL7021/Zhou Xile, Yan Yuehong, Wang Ying, Zhang Jiubing/Yingjiang, Yunnan, China	MK051815	MK052080	MK052342	MK052618
<i>M. lofoushanensis</i>	YanYH13650/Yan Yuehong, Shang Hui/Nankunshan, Longmen,	MK051639	MK051883	MK052133	MK052413

Guangdong, China

<i>M. lofoushanensis</i>	YanYH13739/Yan Yuehong, Shang Hui/Nankunshan, Longmen, Guangdong, China	MK051727	MK051979	MK052236	MK052516
<i>M. lofoushanensis</i>	JSL-TJ 105/Wei Hongjin/Tianjingshan, Ruyuan, Guangdong, China	MK051749	MK052000	MK052261	MK052541
<i>M. lofoushanensis</i>	JSL-TJ 036/Wei Hongjin/Tianjingshan, Ruyuan, Guangdong, China	MK051827	MK052089	MK052357	MK052633
<i>M. lofoushanensis*</i>	WYD641/Yan Yuehong, Wei Hongjin, Wang Ying, Zhu Xiaofeng/Luofushan, Boluo, Guangdong, China	MK051674	MK051923	MK052173	MK052453
<i>M. lofoushanensis*</i>	WYD642/Yan Yuehong, Wei Hongjin, Wang Ying, Zhu Xiaofeng/Luofushan, Boluo, Guangdong, China	MK051675	MK051924	MK052174	MK052454
<i>M. lofoushanensis</i>	HNS043/Yan Yuehong/Bawangling, Changjiang, Hainan, China	MK051738	MK051986	MK052247	MK052527
<i>M. lofoushanensis</i>	HNS045/Yan Yuehong/Diaoluoshan, Lingshui, Hainan, China	MK051739	MK051987	MK052248	MK052528
<i>M. lofoushanensis</i>	YanYH13676/Yan Yuehong, Shang Hui/Nankunshan, Longmen, Guangdong, China	MK051641	MK051885	MK052135	MK052415
<i>M. lofoushanensis</i>	JSL-NL 026/Wei Hongjin/Nanling, Ruyuan, Guangdong, China	MK051654	MK051901	MK052151	MK052431
<i>M. lofoushanensis</i>	JSL-NL 063/Wei Hongjin/Nanling, Ruyuan, Guangdong, China	MK051655	MK051902	MK052152	MK052432
<i>M. lofoushanensis</i>	HNS054/Yan Yuehong/Diaoluoshan, Lingshui, Hainan, China	MK051742	MK051990	MK052251	MK052531
<i>M. manilensis</i>	SG1718/Yan Yuehong, Shang Hui /Malaysia	MK051865	MK052118	MK052396	MK052670
<i>M. marginata</i>	WZS006/Wei Hongjin/Wuzhishan, Hainan, China	MK051696	MK051947	MK052197	MK052477
<i>M. marginata</i>	WYG021/Wei Hongjin, Wang Ying, Zhang Jiubing/Rongjiang, Guizhou, China	MK051767	MK052020	MK052282	MK052559
<i>M. marginata</i>	WYG157/Wei Hongjin, Wang Ying, Zhang Jiubing/Jinping, Guizhou, China	MK051772	MK052025	MK052287	MK052564
<i>M. marginata</i>	WYG232/Wei Hongjin, Wang Ying, Zhang Jiubing/Libo, Guizhou, China	MK051687	MK051936	MK052186	MK052466
<i>M. marginata</i>	WYG281/Wei Hongjin, Wang Ying, Zhang Jiubing/Maolan, Libo, Guizhou, China	MK051782	MK052035	MK052297	MK052574
<i>M. marginata</i>	SG250/Shang Hui, Gu Yufeng /Yushan, Jinagxi, China	MK051660	MK051907	MK052157	MK052437
<i>M. marginata</i>	JSL-NL 022/Wei Hongjin/Nanling, Ruyuan, Guangdong, China	MK051744	MK051992	MK052253	MK052533
<i>M. marginata</i>	WYG185/Wei Hongjin, Wang Ying, Zhang Jiubing/Maolan, Libo, Guizhou, China	MK051682	MK051931	MK052181	MK052461
<i>M. marginata</i>	WYG203/Wei Hongjin, Wang Ying, Zhang Jiubing/Maolan, Libo, Guizhou, China	MK051686	MK051935	MK052185	MK052465
<i>M. marginata</i>	WYG270/Wei Hongjin, Wang Ying, Zhang Jiubing/Maolan, Libo, Guizhou, China	MK051780	MK052033	MK052295	MK052572
<i>M. marginata</i>	WYG052/Wei Hongjin, Wang Ying, Zhang Jiubing/Rongjiang, Guizhou, China	MK051768	MK052021	MK052283	MK052560
<i>M. marginata</i>	WYG107/Wei Hongjin, Wang Ying, Zhang Jiubing/Yueliangshan, Rongjiang, Guizhou, China	MK051770	MK052023	MK052285	MK052562
<i>M. marginata</i>	YYH13287/Yan Yuehong, Wei Hongjin, Wang Ying/Daingshan, Longzhou, Guangxi, China	MK051720	MK051972	MK052229	MK052509

<i>M. marginata</i>	YanYH13692/Wei Hongjin, Wang Ying/Nankunshan, Longmen, Guangdong, China	MK051826	MK052088	MK052356	MK052632
<i>M. marginata</i>	WYD055/Yan Yuehong, Wei Hongjin, Wang Ying, Zhu Xiaofeng/Dinghu shan, Zhaoqing, Guangdong, China	MK051754	MK052005	MK052266	MK052546
<i>M. marginata</i>	WYD052/Yan Yuehong, Wei Hongjin, Wang Ying, Zhu Xiaofeng/Dinghu shan, Zhaoqing, Guangdong, China	MK051753	MK052004	MK052265	MK052545
<i>M. marginata</i> var. <i>bipinnata</i>	ZXL10149/Zhou Xile, Jin Dongmei, Zhao Guohua/Nanling, Guangdong, China	MK051847	—	MK052378	MK052654
<i>M. marginata</i> var. <i>bipinnata</i>	ZXL09979/Zhou Xile, Jin Dongmei, Zhao Guohua/Nanling, Guangdong, China	MK051846	—	MK052377	MK052653
<i>M. marginata</i> var. <i>bipinnata</i>	JSL-WLSQ 0664/Wei Hongjin, Zhang Jiubing/Badagongshan, Sangzhi, Hunan, China	MK051652	MK051899	MK052149	MK052429
<i>M. marginata</i> var. <i>bipinnata</i>	WYG293/Wei Hongjin, Wang Ying, Zhang Jiubing/Maolan, Libo, Guizhou, China	MK051693	MK051942	MK052192	MK052472
<i>M. marginata</i> var. <i>bipinnata</i>	SG356/Shang Hui, Gu Yufeng /Meiling, Nanchang, Jiangxi, China	MK051663	MK051910	MK052160	MK052440
<i>M. marginata</i> var. <i>bipinnata</i>	ZXL05265/Zhou Xile, Yan Yuehong, Jin Dongmei, Li Chunxiang/Yandang shan, Wenzhou, Zhejiang, China	MK051836	MK052097	MK052366	MK052642
<i>M. marginata</i> var. <i>bipinnata</i>	WYG253/Wei Hongjin, Wang Ying, Zhang Jiubing/Maolan, Libo, Guizhou, China	MK051689	MK051938	MK052188	MK052468
<i>M. marginata</i> var. <i>calvescens</i>	WYG002/Wei Hongjin, Wang Ying, Zhang Jiubing/Tianzhu, Guizhou, China	MK051764	MK052017	MK052279	MK052556
<i>M. marginata</i> var. <i>calvescens</i>	WYG006/Wei Hongjin, Wang Ying, Zhang Jiubing/Tianzhu, Guizhou, China	MK051856	MK052111	MK052387	—
<i>M. marginata</i> var. <i>calvescens</i>	WYG055/Wei Hongjin, Wang Ying, Zhang Jiubing/Rongjiang, Guizhou, China	MK051769	MK052022	MK052284	MK052561
<i>M. marginata</i> var. <i>calvescens</i>	WYG194/Wei Hongjin, Wang Ying, Zhang Jiubing/MaolanLibo, Guizhou, China	MK051777	MK052030	MK052292	MK052569
<i>M. marginata</i> var. <i>calvescens</i>	YanYH13818/Yan Yuehong, Shang Hui/Emeishan, Sichuan, China	MK051840	MK052101	MK052370	MK052646
<i>M. marginata</i> var. <i>calvescens</i>	BJZ042/Wei Hongjin, Gu Yufeng, Zhu Xiaofeng/Ziyuan, Guangxi, China	MK051644	MK051888	MK052138	MK052418
<i>M. marginata</i> var. <i>calvescens</i>	WYG155/Wei Hongjin, Wang Ying, Zhang Jiubing/Chandanya, Sandu, Guizhou, China	MK051681	MK051930	MK052180	MK052460
<i>M. marginata</i> var. <i>villosa</i>	WYD158/Yan Yuehong, Wei Hongjin, Wang Ying, Zhu Xiaofeng/Haishiding, Fengkai, Guangdong, China	MK051757	MK052008	MK052269	MK052549
<i>M. marginata</i> var. <i>villosa</i>	YYH13356/Yan Yuehong, Wei Hongjin, Wang Ying/Daqingshan, Longzhou, Guangxi, China	MK051637	MK051881	MK052131	MK052411
<i>M. marginata</i> var. <i>villosa</i>	WYG323/Wei Hongjin, Wang Ying, Zhang Jiubing/Luodian, Guizhou, China	MK051784	MK052037	MK052299	MK052576
<i>M. marginata</i> var. <i>villosa</i>	WYD439/Yan Yuehong, Wei Hongjin, Wang Ying, Zhu Xiaofeng/Datianding, Xinyi, Guangdong, China	MK051759	MK052010	MK052271	—
<i>M. marginata</i> var. <i>villosa</i>	YYH12368/Yan Yuehong, Shang Hui, Gu Yufeng/Malipo, Yunnan, China	MK051633	MK051876	MK052126	MK052406

<i>M. marginata</i> var. <i>villosa</i>	JSL-WLSQ 0688/Wei Hongjin, Zhang Jiubing/Badagongshan, Sangzhi, Hunan, China	MK051653	MK051900	MK052150	MK052430
<i>M. marginata</i> var. <i>villosa</i>	WYG128/Wei Hongjin, Wang Ying, Zhang Jiubing/Yueliangshan, Rongjiang, Guizhou, China	MK051678	MK051927	MK052177	MK052457
<i>M. matthewii</i>	YYH13164/Yan Yuehong/Danxiading, Renhua, Guangdong, China	MK051636	MK051880	MK052130	MK052410
<i>M. matthewii</i> *	YYH12410/Yan Yuehong /Shimentai, Yingde, Guangdong, China	MK051713	MK051966	MK052222	MK052502
<i>M. matthewii</i> ^	SG288/Shang Hui, Gu Yufeng/Longhu shan, Yingtan, Jiangxi, China	MK051610	MK051994	MK052255	MK052535
<i>M. mollifolia</i>	YYH11625/Yan Yuehong , He Zuxia /lianhuachi, Nantou, Taiwan, China	MK051709	MK051962	MK052214	MK052494
<i>M. obtusiloba</i>	HN12089/Yan Yuehong/Hainan, China	MK051650	MK051895	MK052145	MK052425
<i>M. obtusiloba</i>	HNS006/Yan Yuehong/Diaoluoshan, Lingshui, Hainan, China	MK051651	MK051896	MK052146	MK052426
<i>M. obtusiloba</i>	ZXL05056/Zhou Xile, Shang Hui /Shiwandashan, Shangsi, Guangxi, China	MK051706	MK051959	MK052211	MK052491
<i>M. obtusiloba</i>	YYH11602/Yan Yuehong, He Zuxia /Yanmingshan, Taibei, Taiwan, China	MK051842	MK052103	MK052372	MK052648
<i>M. obtusiloba</i>	YYH13452-2/Yan Yuehong, Wei Hongjin, Wang Ying/Daingshan, Longzhou, Guangxi, China	MK051724	MK051976	MK052233	MK052513
<i>M. obtusiloba</i>	SG2854/Shang Hui, Wei Hongjin, Shu Jiangping, Huang Kerui/Jianfengling, Ledong, Hainan, China	MK051664	MK051913	MK052163	MK052443
<i>M. obtusiloba</i>	SG2856/Shang Hui, Wei Hongjin, Shu Jiangping, Huang Kerui/Jianfengling, Ledong, Hainan, China	MK051665	MK051914	MK052164	MK052444
<i>M. obtusiloba</i>	WZS002/Wei Hongjin/Wuzhishan, Hainan, China	MK051695	MK051945	MK052195	MK052475
<i>M. obtusiloba</i>	WYD050/Yan Yuehong, Wei Hongjin, Wang Ying, Zhu Xiaofeng/Dinghu shan, Zhaoqing, Guangdong, China	MK051751	MK052002	MK052263	MK052543
<i>M. obtusiloba</i>	WYD051/Yan Yuehong, Wei Hongjin, Wang Ying, Zhu Xiaofeng/Dinghu shan, Zhaoqing, Guangdong, China	MK051752	MK052003	MK052264	MK052544
<i>M. obtusiloba</i>	WYD098/Yan Yuehong, Wei Hongjin, Wang Ying, Zhu Xiaofeng/Dinghu shan, Zhaoqing, Guangdong, China	MK051755	MK052006	MK052267	MK052547
<i>M. platyphylla</i>	WYD609/Yan Yuehong, Wei Hongjin, Wang Ying, Zhu Xiaofeng/Dawuling, Xinyi, Guangdong, China	MK051831	MK052092	MK052361	MK052637
<i>M. platyphylla</i>	YYH12366/Yan Yuehong, Shang Hui, Gu Yufeng/Malipo, Yunnan, China	MK051632	MK051875	MK052125	MK052405
<i>M. platyphylla</i>	YYH12394/Yan Yuehong, Shang Hui, Gu Yufeng/Malipo, Yunnan, China	MK051634	MK051878	MK052128	MK052408
<i>M. platyphylla</i>	YYH12082/Yan Yuehong, Shang Hui, Gu Yufeng/Xishuangbanna, Mengna, Yunnan, China	MK051833	MK052094	MK052363	MK052639
<i>M. platyphylla</i>	WangLi4919/Wang Li/Chayu, Tibet, China	MK051630	MK051872	MK052122	MK052402
<i>M. platyphylla</i>	Shui80770/Shui Yumin/Xichou, Yunnan, China	MK051643	MK051887	MK052137	MK052417
<i>M. rhomboidea</i>	WYD529/Yan Yuehong, Wei Hongjin, Wang Ying, Zhu Xiaofeng/Dawuling, Xinyi, Guangdong, China	MK051763	-	MK052278	MK052555
<i>M. rhomboidea</i>	WYD608/Yan Yuehong, Wei Hongjin, Wang Ying, Zhu Xiaofeng/Dawuling, Xinyi, Guangdong, China	MK051830	-	MK052360	MK052636
<i>M. rhomboidea</i>	SG2641/Shang Hui/Bulangshan, Menghai, Yunnan, China	MK051806	MK052059	MK052321	MK052597

<i>M. ridleyi</i>	KNBL189/Yan Yuehong, Shang Hui/Malaysia	MK051863	MK052116	MK052394	MK052668
<i>M. ridleyi</i>	KNBL211/Yan Yuehong, Shang Hui/Malaysia	MK051864	MK052117	MK052395	MK052669
<i>M. scaberula</i>	INA-BL18/Yan Yuehong, Shang Hui/Bali, Indonesia	MK051645	MK051889	MK052139	MK052419
<i>M. rhomboidea</i>	WZS001/Wei Hongjin/Wuzhishan, Hainan, China	MK051694	MK051944	MK052194	MK052474
<i>M. rhomboidea</i>	WZS004/Wei Hongjin/Wuzhishan, Hainan, China	MK051786	MK052039	MK052301	MK052578
<i>M. speluncae</i>	SG1937/Shang Hui, Luo Junjie /Yingjiang, Yunna, China	MK051867	MK052119	MK052398	MK052672
<i>M. speluncae</i>	ZXL05199/Zhou Xile, Shang Hui /Chongzuo, Guangxi, China	MK051707	MK051960	MK052212	MK052492
<i>M. speluncae</i>	WYD271/Yan Yuehong, Wei Hongjin, Wang Ying, Zhu Xiaofeng/Gaozhou, Guangdong, China	MK051828	MK052090	MK052358	MK052634
<i>M. speluncae</i>	WYG319/Wei Hongjin, Wang Ying, Zhang Jiubing/Luodian, Guizhou, China	MK051783	MK052036	MK052298	MK052575
<i>M. speluncae</i>	WYG352/Wei Hongjin, Wang Ying, Zhang Jiubing/Zhenfeng, Guizhou, China	MK051785	MK052038	MK052300	MK052577
<i>M. speluncae</i>	HNS050/Yan Yuehong/Shaxian, Hainan, China	MK051740	MK051988	MK052249	MK052529
<i>M. speluncae</i>	ZXL7022/Zhou Xile, Yan Yuehong, Wang Ying, Zhang Jiubing/Yingjiang, Yunnan, China	MK051816	MK052081	MK052343	MK052619
<i>M. speluncae</i>	YYH12379/Yan Yuehong, Shang Hui, Gu Yufeng/Laoshan, Malipo, Yunnan, China	MK051712	MK051965	MK052221	MK052501
<i>M. speluncae</i>	ZXL09840/Zhou Xile, Yan Yuehong, Du Cheng/Thung Salaeng Luang National Park, Thailand	MK051792	MK052045	MK052307	MK052584
<i>M. speluncae</i>	ZXL09896/Zhou Xile, Yan Yuehong, Du Cheng/Queen Sirikit Botanic Garden, Chiang Mai, Thailand	MK051795	MK052048	MK052310	MK052587
<i>M. speluncae</i>	ZXL7025/Zhou Xile, Yan Yuehong, Wang Ying, Zhang Jiubing/Yingjiang, Yunnan, China	MK051817	MK052082	MK052344	MK052620
<i>M. speluncae</i>	ZXL7029/Zhou Xile, Yan Yuehong, Wang Ying, Zhang Jiubing/Yingjiang, Yunnan, China	MK051818	MK052083	MK052345	MK052621
<i>M. speluncae</i>	ZXL7034/Zhou Xile, Yan Yuehong, Wang Ying, Zhang Jiubing/Yingjiang, Yunnan, China	MK051819	MK052084	MK052346	MK052622
<i>M. speluncae</i>	YYH13358/Yan Yuehong, Wei Hongjin, Wang Ying/Daqingshan, Longzhou, Guangxi, China	MK051721	MK051973	MK052230	MK052510
<i>M. strigosa</i>	INA-BL48/Yan Yuehong, Shang Hui/Bali island, Indonesia	MK051647	MK051891	MK052141	MK052421
<i>M. strigosa</i>	INA-BL80/Yan Yuehong, Shang Hui /Bali island, Indonesia	MK051648	MK051892	MK052142	MK052422
<i>M. strigosa</i>	WYG178/Wei Hongjin, Wang Ying, Zhang Jiubing/Maolan, Libo, Guizhou, China	MK051773	MK052026	MK052288	MK052565
<i>M. strigosa</i>	WYG190/Wei Hongjin, Wang Ying, Zhang Jiubing/Maolan, Libo, Guizhou, China	MK051775	MK052028	MK052290	MK052567
<i>M. strigosa</i>	JSL-WLSQ 0782/Wei Hongjin, Zhang Jiubing/Tianpingshan, Sangzhi, Hunan, China	MK051743	MK051991	MK052252	MK052532
<i>M. strigosa</i>	SG272/Shang Hui, Gu Yufeng /Guifeng, Yiyang, Jiangxi, China	MK051745	MK051993	MK052254	MK052534

<i>M. strigosa</i>	WYG280/Wei Hongjin, Wang Ying, Zhang Jiubing/Maolan, Libo, Guizhou, China	MK051781	MK052034	MK052296	MK052573
<i>M. strigosa</i>	ZXL05284/Zhou Xile, Yan Yuehong, Jin Dongmei, Li Chunxiang/Yandang shan, Wenzhou, Zhejiang, China	MK051837	MK052098	MK052367	MK052643
<i>M. strigosa</i>	SG021/Shang Hui, Gu Yufeng /Longyan, Fujian, China	MK051656	MK051903	MK052153	MK052433
<i>M. strigosa</i>	WYG192/Wei Hongjin, Wang Ying, Zhang Jiubing/Maolan, Libo, Guizhou, China	MK051776	MK052029	MK052291	MK052568
<i>M. strigosa</i>	SG127/Shang Hui, Gu Yufeng/Maoershan, Taining, Fujian, China	MK051658	MK051905	MK052155	MK052435
<i>M. strigosa</i>	YYH11609/Yan Yuehong, He Zuxia /Yanmingshan, Taibei, Taiwan, China	MK051843	MK052104	MK052373	MK052649
<i>M. strigosa</i>	WYG184/Wei Hongjin, Wang Ying, Zhang Jiubing/Maolan, Libo, Guizhou, China	MK051774	MK052027	MK052289	MK052566
<i>M. strigosa</i>	BJZ045/Wei Hongjin, Gu Yufeng, Zhu Xiaofeng/Ziyuan, Guangxi, China	MK051832	MK052093	MK052362	MK052638
<i>M. strigosa</i>	WYG207/Wei Hongjin, Wang Ying, Zhang Jiubing/Maolan, Libo, Guizhou, China	MK051778	MK052031	MK052293	MK052570
<i>M. strigosa</i>	ZXL05291/Zhou Xile, Yan Yuehong, Jin Dongmei, Li Chunxiang/Yandang shan, Wenzhou, Zhejiang, China	MK051838	MK052099	MK052368	MK052644
<i>M. strigosa</i>	SG023/Shang Hui, Gu Yufeng /Longyan, Fujian, China	MK051657	MK051904	MK052154	MK052434
<i>M. strigosa</i>	JSL-TJ 082/Wei Hongjin/Tianjingshan, Ruyuan, Guangdong, China	MK051747	MK051998	MK052259	MK052539
<i>M. strigosa</i>	SG136/Shang Hui, Gu Yufeng/Maoershan, Taining, Fujian, China	MK051659	MK051906	MK052156	MK052436
<i>M. strigosa</i>	WYG003/Wei Hongjin, Wang Ying, Zhang Jiubing/Tianzhu, Guizhou, China	MK051765	MK052018	MK052280	MK052557
<i>M. strigosa</i>	WYG110/Wei Hongjin, Wang Ying, Zhang Jiubing/Yueliangshan, Rongjiang, Guizhou, China	MK051859	MK052113	MK052390	MK052665
<i>M. strigosa</i>	WYG279/Wei Hongjin, Wang Ying, Zhang Jiubing/Maolan, Libo, Guizhou, China	MK051860	MK052114	MK052391	-
<i>M. strigosa</i>	YYH11637/Yan Yuehong, He Zuxia /Nantou, Taiwan, China	MK051710	-	MK052215	MK052495
<i>M. strigosa</i>	2212/Three Gorges Expedition /Shizhu, Chongqing, China	MK051852	MK052108	MK052383	MK052659
<i>M. strigosa</i>	WYG355/Wei Hongjin, Wang Ying, Zhang Jiubing/Zhenfeng, Guizhou, China	MK051861	-	MK052392	MK052666
<i>M. strigosa</i>	YanYH13789/Yan Yuehong, Shang Hui/Emeishan, Sichuan, China	MK051728	-	MK052237	MK052517
<i>M. strigosa</i>	YanYH13791/Yan Yuehong, Shang Hui/Fuhu, Emeishan, Sichuan, China	MK051729	-	MK052238	MK052518
<i>M. strigosa</i>	SG2591/Ge Binjie, Zhong Xin, Shang Hui, Liu Ziyue/Taohuadao, Zhoushan, Zhejiang, China	MK051845	-	MK052376	MK052652
<i>M. subspeluncae*</i>	ZXL7016/Zhou Xile, Yan Yuehong, Wang Ying, Zhang Jiubing/Yingjiang, Yunnan, China	MK051871	MK052078	MK052340	MK052616
<i>M. subspeluncae*</i>	ZXL7019/Zhou Xile, Yan Yuehong, Wang Ying, Zhang Jiubing/Yingjiang, Yunnan, China	MK051814	MK052079	MK052341	MK052617
<i>M. subspeluncae*</i>	ZXL7067/Zhou Xile, Yan Yuehong, Wang Ying, Zhang Jiubing/Yingjiang, Yunnan, China	MK051820	MK052085	MK052347	MK052623

<i>M. subtrichosticha</i> [*] ^	SG2806/Shang Hui, Wei Hongjin, Shu Jiangping, Huang Kerui/Qingzhong, Hainan, China	MK051600	MK051911	MK052161	MK052441
<i>M. subtrichosticha</i> [*]	XP617/13215/Yan Yuehong, Qi Xinping, Shen Hui/Qiongzong, Hainan, China	MK051698	MK051950	MK052200	MK052480
<i>M. subtrichosticha</i> [*]	XP618/13214/Yan Yuehong, Qi Xinping, Shen Hui/Qiongzong, Hainan, China	MK051699	MK051951	MK052201	MK052481
<i>M. subtrichosticha</i> [*]	SG2837/Shang Hui, Wei Hongjin, Shu Jiangping, Huang Kerui/Wuzhishan, Hainan, China	MK051848	-	MK052379	MK052655
<i>M. szechuanica</i>	WYG026/Wei Hongjin, Wang Ying, Zhang Jiubing/Rongjiang, Guizhou, China	MK051676	MK051925	MK052175	MK052455
<i>M. szechuanica</i>	WYG056/Wei Hongjin, Wang Ying, Zhang Jiubing/Rongjiang, Guizhou, China	MK051677	MK051926	MK052176	MK052456
<i>M. szechuanica</i>	WYG101/Wei Hongjin, Wang Ying, Zhang Jiubing/Rongjiang, Guizhou, China	MK051858	-	MK052389	MK052664
<i>M. szechuanica</i>	WYG011/Wei Hongjin, Wang Ying, Zhang Jiubing/Rongjiang, Guizhou, China	MK051766	MK052019	MK052281	MK052558
<i>M. szechuanica</i>	WYG014/Wei Hongjin, Wang Ying, Zhang Jiubing/Rongjiang, Guizhou, China	MK051857	MK052112	MK052388	MK052663
<i>M. szechuanica</i>	ZXL5677/Zhou Xile, Zhang Jiubing /Zihuai, Hejiang, Sichuan, China	MK051809	MK052062	MK052324	MK052600
<i>M. szechuanica</i> [*]	YanYH13800/Yan Yuehong, Shang Hui/Fuhu, Emeishan, Sichuan, China	MK051730	-	MK052239	MK052519
<i>M. szechuanica</i> [*]	YanYH13805/Yan Yuehong, Shang Hui/Fuhu, Emeishan, Sichuan, China	MK051731	-	MK052240	MK052520
<i>M. szechuanica</i> [*]	YanYH13825/Yan Yuehong, Shang Hui/Leiyin, Emeishan, Sichuan, China	MK051732	MK051980	MK052241	MK052521
<i>M. szechuanica</i> [*]	YanYH13823/Yan Yuehong, Shang Hui/Leiyin, Emeishan, Sichuan, China	MK051841	MK052102	MK052371	MK052647
<i>M. tenera</i>	SG1026/Shang Hui/Menglian, Yunnan, China	MK051801	MK052054	MK052316	MK052592
<i>M. tenera</i>	KY1426/Shen Guanyu/Dadong shan, Jiayi, Taiwan, China	MK051802	MK052055	MK052317	MK052593
<i>M. todayensis</i>	INA-BL44/Yan Yuehong, Shang Hui /Bali, Indonesia	MK051646	MK051890	MK052140	MK052420
<i>M. todayensis</i>	INA-BL49/Yan Yuehong, Shang Hui /Bali, Indonesia	MK051733	MK051981	MK052242	MK052522
<i>M. todayensis</i>	INA-BL67/Yan Yuehong, Shang Hui /Bali, Indonesia	MK051734	MK051982	MK052243	MK052523
<i>M. todayensis</i>	INA-BL68/Yan Yuehong, Shang Hui /Bali, Indonesia	MK051735	MK051983	MK052244	MK052524
<i>M. yaoshanica</i>	WYD452/Yan Yuehong, Wei Hongjin, Wang Ying, Zhu Xiaofeng/Datianding, Xinyi, Guangdong, China	MK051761	MK052015	MK052276	MK052553
<i>M. yaoshanica</i>	WYD479/Yan Yuehong, Wei Hongjin, Wang Ying, Zhu Xiaofeng/Dawuling, Xinyi, Guangdong, China	MK051762	MK052016	MK052277	MK052554
<i>M. yaoshanica</i>	WYD303/Yan Yuehong, Wei Hongjin, Wang Ying, Zhu Xiaofeng/Datianding, Xinyi, Guangdong, China	MK051667	MK051916	MK052166	MK052446
<i>M. yaoshanica</i>	YYH12136/Yan Yuehong, Shang Hui, Gu Yufeng/Pingbian, Yunnan, China	MK051834	MK052095	MK052364	MK052640
<i>M. yaoshanica</i>	WYD443/Yan Yuehong, Wei Hongjin, Wang Ying, Zhu Xiaofeng/Datianding, Xinyi, Guangdong, China	MK051760	MK052011	MK052272	-

<i>M. trichocarpa</i>	WYD390/Yan Yuehong, Wei Hongjin, Wang Ying, Zhu Xiaofeng/Datianding, Xinyi, Guangdong, China	MK051758	MK052009	MK052270	MK052550
<i>M. trichocarpa</i> [^]	ZXL5927/Zhou Xile, Yan Yuehong, Wang Ying, Zhang Jiubing/Baihualing, Baoshan, Yunnan, China	MK051618	MK052068	MK052330	MK052606
<i>M. trichocarpa</i> [^]	ZXL7000/Zhou Xile, Yan Yuehong, Wang Ying, Zhang Jiubing/Yingjiang, Yunnan, China	MK051621	MK052073	MK052335	MK052611
<i>M. trichocarpa</i> [^]	ZXL7001/Zhou Xile, Yan Yuehong, Wang Ying, Zhang Jiubing/Yingjiang, Yunnan, China	MK051622	MK052074	MK052336	MK052612
<i>M. trichocarpa</i> [^]	ZXL7003/Zhou Xile, Yan Yuehong, Wang Ying, Zhang Jiubing/Yingjiang, Yunnan, China	MK051623	MK052075	MK052337	MK052613
<i>M. trichocarpa</i> [^]	ZXL7195/Zhou Xile, Yan Yuehong, Wang Ying, Zhang Jiubing/Baihualing, Baoshan, Yunnan, China	MK051628	-	MK052350	MK052626
<i>M. trichocarpa</i> [^]	WYD447/Yan Yuehong, Wei Hongjin, Wang Ying, Zhu Xiaofeng/Datianding, Xinyi, Guangdong, China	MK051613	MK052012	MK052273	MK052551
<i>M. trichocarpa</i> [^]	WYD448/Yan Yuehong, Wei Hongjin, Wang Ying, Zhu Xiaofeng/Datianding, Xinyi, Guangdong, China	MK051614	MK052013	MK052274	MK052552
<i>M. trichocarpa</i> [^]	WYD449/Yan Yuehong, Wei Hongjin, Wang Ying, Zhu Xiaofeng/Datianding, Xinyi, Guangdong, China	MK051615	MK052014	MK052275	-
<i>M. trichocarpa</i> [^]	YYH12370/Yan Yuehong, Shang Hui, Gu Yufeng/Malipo, Yunnan, China	MK051596	MK051877	MK052127	MK052407
<i>M. trichocarpa</i> [^]	ZXL6994/Zhou Xile, Yan Yuehong, Wang Ying, Zhang Jiubing/Yingjiang, Yunnan, China	MK051619	MK052071	MK052333	MK052609
<i>M. trichocarpa</i> [^]	ZXL6995/Zhou Xile, Yan Yuehong, Wang Ying, Zhang Jiubing/Yingjiang, Yunnan, China	MK051620	MK052072	MK052334	MK052610
<i>M. trichocarpa</i> [^]	JSL2764/Wei Hongjin, Zhang Jiubing /Lvchun, Yunnan, China	MK051599	MK051898	MK052148	MK052428
<i>M. trichocarpa</i> [^]	YYH12033/Yan Yuehong, Shang Hui, Gu Yufeng/Mengsong, Xishuangbanna, Yunnan, China	MK051606	MK051963	MK052217	MK052497
<i>M. trichocarpa</i> [^]	ZXL5910/Zhou Xile, Yan Yuehong, Wang Ying, Zhang Jiubing/Baihualing, Baoshan, Yunnan, China	MK051617	MK052065	MK052327	MK052603
<i>M. trichocarpa</i> [^]	YYH12042/Yan Yuehong, Shang Hui, Gu Yufeng/Mengsong, Xishuangbanna, Yunnan, China	MK051607	MK051964	MK052218	MK052498
<i>M. trichosora</i>	WYD389/Yan Yuehong, Wei Hongjin, Wang Ying, Zhu Xiaofeng/Datianding, Xinyi, Guangdong, China	MK051829	MK052091	MK052359	MK052635
<i>M. trichosora</i>	WYD445/Yan Yuehong, Wei Hongjin, Wang Ying, Zhu Xiaofeng/Datianding, Xinyi, Guangdong, China	MK051855	MK052110	MK052386	MK052662
<i>M. villosa</i>	ZXL7257/Yan Yuehong, Wei Hongjin, Zhou Xile, Jin Dongmei/Motuo, Tibet, China	MK051869	MK052120	MK052400	MK052674
<i>M. villosa</i>	ZXL7382/Yan Yuehong, Wei Hongjin, Zhou Xile, Jin Dongmei/Zamo Road and , Tibet, China	MK051870	MK052121	MK052401	MK052675
<i>M. villosa</i>	YYH13056/Yan Yuehong, Gu Yufeng /Motuo, Tibet, China	MK051635	MK051879	MK052129	MK052409
<i>M. villosa</i>	SG2632/Shang Hui/Bulangshan, Menghai, Yunnan, China	MK051805	MK052058	MK052320	MK052596
<i>M. villosa</i>	YYH13080/Yan Yuehong , Qi Xinping, Shang Hui, Gu Yufeng/Motuo, Tibet, China	MK051718	-	MK052227	MK052507

<i>M. villosa</i>	STET1890/Li Zhongyang/Motuo, Tibet, China	MK051797	MK052050	MK052312	MK052589
<i>M. yaoshanica</i>	JSL4490/Yan Yuehong, Wei Hongjin, Zhou Xile, Jin Dongmei/ Motuo, Tibet, China	MK051862	MK052115	MK052393	MK052667
<i>M. yunnanensis</i>	YYH13072/Yan Yuehong, Gu Yufeng /Motuo, Tibet, China	MK051850	-	MK052381	MK052657
<i>M. yunnanensis</i>	YYH13109/Yan Yuehong , Qi Xiping, Shang Hui, Gu Yufeng/Motuo, Tibet, China	MK051849	-	MK052380	MK052656
<i>M. yunnanensis</i>	YYH13136/Yan Yuehong , Qi Xiping, Shang Hui, Gu Yufeng/Motuo, Tibet, China	MK051719	MK051971	MK052228	MK052508
<i>M. yunnanensis</i>	ZXL6988/Zhou Xile, Yan Yuehong, Wang Ying, Zhang Jiubing/Yingjiang, Yunnan, China	MK051822	-	MK052352	MK052628
<i>M. yunnanensis</i>	ZXL7040/Zhou Xile, Yan Yuehong, Wang Ying, Zhang Jiubing/Yingjiang, Yunnan, China	MK051823	-	MK052353	MK052629
<i>M. yunnanensis</i>	ZXL7080/Zhou Xile, Yan Yuehong, Wang Ying, Zhang Jiubing/Lianghe, Yunnan, China	MK051824	-	MK052354	MK052630
<i>M. yunnanensis</i>	ZXL7082/Zhou Xile, Yan Yuehong, Wang Ying, Zhang Jiubing/Lianghe, Yunnan, China	MK051825	-	MK052355	MK052631
<i>M. yunnanensis</i>	STET1934/Li Zhongyang/Motuo, Tibet, China	MK051798	MK052051	MK052313	-

-代表无序列; *表示该样本采自模式产地; ^表示该样本 *rbcl* 为假基因

- represents no; * means the sample was collected type locality; ^ means *rbcl* gene of this sample was pseudogene

附表 2 PCR 引物序列与扩增程序

Appendix table 2 Information about PCR primers and procedure

DNA regions	Primer pairs	Sequence (5'to 3')	Thermocycling conditions	Reference
<i>rbcl</i>	AF	ATGTCACCACAAACAGAGA CTAAAGC	95°C 3 min; 95°C 1 min, 51°C 1 min, 72°C 80 s, 35 cycles; 72°C 10 min	Hasebe et al., 1994
	1379R	TCACAAGCAGCAGCTAGTT CAGGACTC		Pryer et al., 2001
<i>rps4</i>	<i>rps4.5'</i>	ATGTCSCGTTAYCG AGGACCT	95°C 3 min; 94°C 30 s, 58°C 45 s, 72°C 80 s, 35 cycles; 72°C 10 min	Souza-Chies et al., 1997
	<i>trnS</i>	TTACCGAGGGTTCCG AATCCCTC		Shaw et al., 2005
<i>psbA-trnH</i>	<i>psbA</i>	GTTATGCATGAACGTAATGC TC	94°C 2 min; 94°C 35 s, 52°C 40 s, 72°C 45 s, 35 cycles; 72°C 7 min	Tate and Simpson, 2003
	<i>trnH2</i>	CGCGCATGGTGGATTCACA ATCC		Tate and Simpson, 2003
<i>trnL-F</i>	<i>f</i>	ATTTGAACTGGTGACACGA G	95°C 3 min; 95°C 1 min, 51°C 1 min, 72°C 80 s, 35 cycles; 72°C 10 min	Taberlet et al., 1991
	FernLr1	GGCAGCCCCCAGATTCAGG GGAACC		Li et al., 2011

附表 3 鳞盖蕨属孢子形态特征及凭证标本

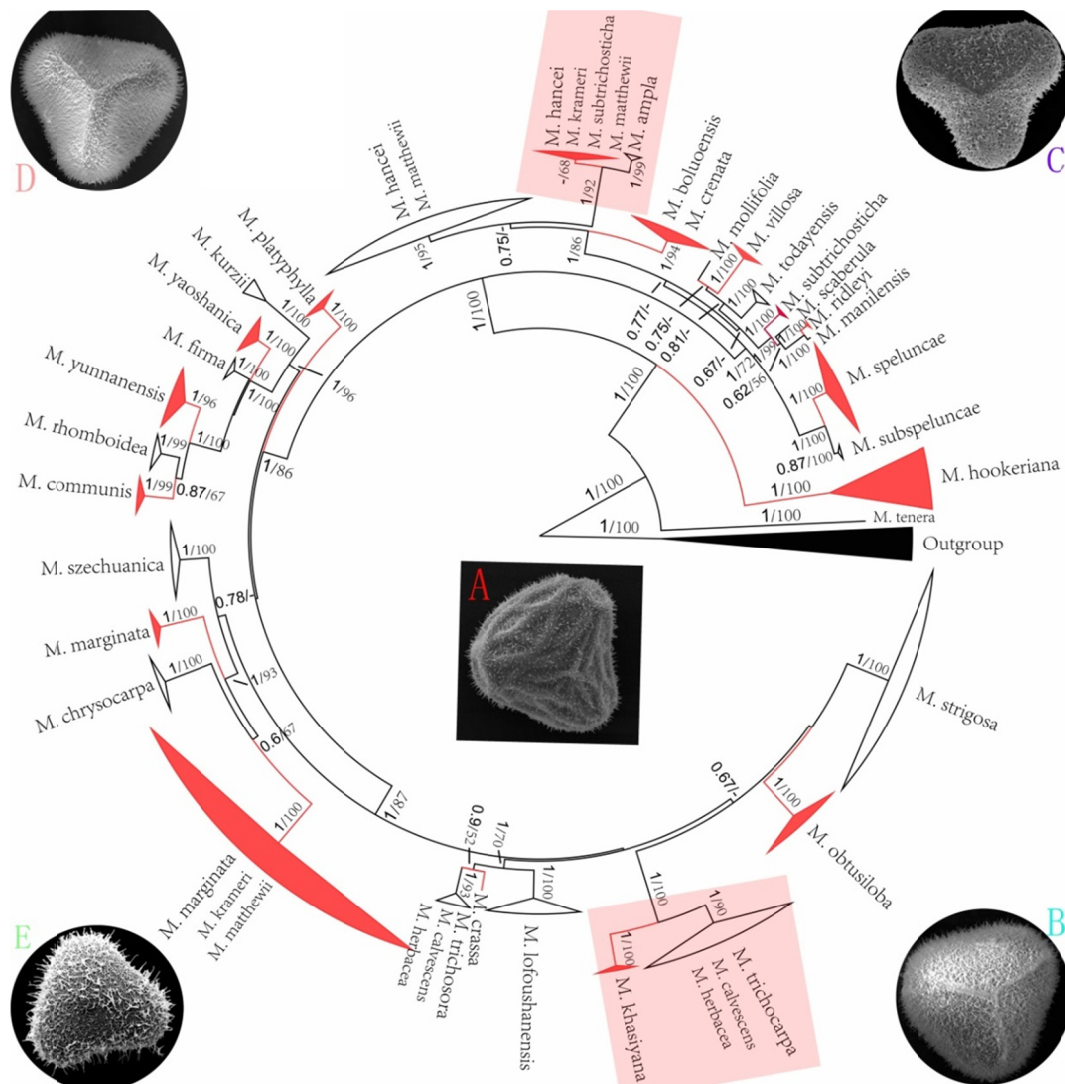
Appendix table 3 Details of spore morphology and voucher specimens

Species	Polar (μm)	Equatorial (μm)	Ornamentation	Voucher	Appendix figure
<i>M. tenera</i>	20.7 \pm 2.0	29 \pm 2.1	Lophate+Sparse capillate	SG1026	2A, B
<i>M. hookeriana</i>	27.5 \pm 3.2	36.4 \pm 2.4	Reticulate+Sericate	WYD218	2C
<i>M. hookeriana</i>	24.2 \pm 1.8	34.64 \pm 0.1	Reticulate+Sericate	WYG233	2D
<i>M. hookeriana</i>	20.7 \pm 1.8	28 \pm 2.5	Reticulate+Sericate	SG1721	2E
<i>M. subspeluncae</i>	23.6 \pm 1.8	34.9 \pm 3.1	Reticulate+Sparse capillate	ZXL07067	2F
<i>M. subspeluncae</i>	19.8 \pm 1.3	33.1 \pm 1.6	Reticulate+Sparse capillate	ZXL7016	2G
<i>M. speluncae</i>	23.2 \pm 0.8	34.4 \pm 2.8	Reticulate+Sparse capillate	WYD271	2H
<i>M. speluncae</i>	23.2 \pm 0.1	33.2 \pm 1.4	Reticulate+Sparse capillate	ZXL09896	2I
<i>M. speluncae</i>	22.8 \pm 0.7	31.7 \pm 1.1	Reticulate+Sparse capillate	WYG319	2J
<i>M. speluncae</i>	23.7 \pm 1.9	35.2 \pm 2.2	Reticulate+Sparse capillate	WYG352	2K
<i>M. mollifolia</i>	-	-	Deformity+Reticulate	YYH11625	2L
<i>M. villosa</i>	18.1 \pm 1.3	28.8 \pm 1.1	Reticulate	SG2632	2M
<i>M. villosa</i>	19.9 \pm 1.6	27.6 \pm 1.7	Reticulate	13056	2N
<i>M. todayensis</i>	20.1 \pm 1.1	28.5 \pm 1.6	Reticulate+Sheet capillate	INA-BL49	2O
<i>M. todayensis</i>	20.8 \pm 0.6	29 \pm 0.4	Reticulate+Dense capillate	INA-BL44	3A
<i>M. ridleyi</i>	21.5 \pm 1.0	34.5 \pm 1.4	Reticulate+Sparse capillate	KNBL189	3B
<i>M. manilensis</i>	23.5 \pm 1.6	32.6 \pm 1.2	Reticulate+Sparse capillate	SG1718	3C
<i>M. subtrichosticha</i>	27 \pm 0.1	35.7 \pm 1.4	Reticulate	XP618	3D
<i>M. subtrichosticha</i>	-	-	Deformity+Reticulate	SG2837	3E
<i>M. ampla</i>	-	-	Deformity+Reticulate	WZS003	3F
<i>M. ampla</i>	21.9 \pm 2.1	32.5 \pm 2.4	Reticulate+Sparse capillate	SG2830	3G
<i>M. hancei</i>	21.2 \pm 0.8	29.4 \pm 0.1	Reticulate	WYG320	3H
<i>M. subtrichosticha</i>	-	-	Deformity+Reticulate	SG2806	3I
<i>M. krameri</i>	-	-	Deformity+Reticulate	YYH11607	3J
<i>M. matthewii</i>	-	-	Deformity+Reticulate	SG288	3K
<i>M. crenata</i>	24 \pm 0.3	36.2 \pm 1.8	Reticulate+Sparse capillate	ZXL09872	3L
<i>M. boluoensis</i>	22.7 \pm 1.3	34.3 \pm 1.5	Reticulate+Sparse capillate	WYD623	3M
<i>M. boluoensis</i>	20.7 \pm 1.0	31.3 \pm 1.6	Reticulate+Sparse capillate	WYD626	3N
<i>M. crenata</i>	23.8 \pm 1.1	35.5 \pm 1.4	Reticulate+Sparse capillate	ZXL09873	3O
<i>M. crenata</i>	23.7 \pm 0.1	32.5 \pm 0.7	Reticulate	ZXL09779	4A
<i>M. crenata</i>	22.6 \pm 0.8	33.6 \pm 0.7	Reticulate	ZXL09794	4B
<i>M. matthewii</i>	-	-	Deformity+Reticulate	YYH12410	4C
<i>M. hancei</i>	23.5 \pm 0.1	36 \pm 0.8	Reticulate	YYH13483	4D, E
<i>M. hancei</i>	22 \pm 0.1	33.81 \pm 2.5	Reticulate+Sparse capillate	JSL-TJ075	4F
<i>M. hancei</i>	24.1 \pm 0.4	32.3 \pm 1.8	Reticulate+Sparse capillate	WYD011	4G
<i>M. hancei</i>	25 \pm 1.4	33.8 \pm 0.1	Reticulate+Sparse capillate	YYH13703	4H
<i>M. platyphylla</i>	23.4 \pm 1.9	33.5 \pm 1.4	Reticulate	YYH12394	4I
<i>M. platyphylla</i>	22.3 \pm 0.6	32.9 \pm 1.8	Reticulate+Dense capillate	YYH12366	4J, K
<i>M. kurzii</i>	25.8 \pm 2.2	37.4 \pm 1.3	Reticulate+Dense capillate	YYH12098	4L
<i>M. kurzii</i>	25.7 \pm 1.8	36.3 \pm 1.2	Reticulate+Dense capillate	SG1946	4M
<i>M. firma</i>	27.7 \pm 1.7	40.3 \pm 0.9	Reticulate+Dense capillate	ZXL6882	4N, O

<i>M. firma</i>	26.8±1.0	40.6±1.2	Reticulate+Dense capillate	ZXL6895	5A
<i>M. firma</i>	29.9±1.3	43.1±1.9	Reticulate+Dense capillate	ZXL5925	5B
<i>M. yaoshanica</i>	28.3±0.5	40.4±2.2	Reticulate+Dense capillate	WYD303	5C, D
<i>M. yunnanensis</i>	24.7±2.3	33.4±2.7	Reticulate+Dense capillate	ZXL7040	5E
<i>M. yunnanensis</i>	26.7±2.7	35.6±3	Reticulate+Dense capillate	YYH13109	5F
<i>M. yunnanensis</i>	–	–	Deformity+Reticulate	ZXL6988	5G
<i>M. rhomboidea</i>	29.7±1.0	40.9±1.8	Reticulate+Dense capillate	SG2641	5H
<i>M. rhomboidea</i>	26.5±0.9	37.8±3.1	Reticulate+Dense capillate	WZS004	5I
<i>M. rhomboidea</i>	28.2±1.2	40.6±2.2	Reticulate+Dense capillate	WYD529	5J
<i>M. communis</i>	24.3±1.2	36.6±2.1	Reticulate+Dense capillate	SG2624	5K
<i>M. communis</i>	30.8±1.6	40±0.7	Reticulate+Dense capillate	12367	5L
<i>M. strigosa</i>	–	–	Deformity	SG023	5M
<i>M. strigosa</i>	–	–	Deformity+Reticulate	WYG184	5N
<i>M. strigosa</i>	27±0.6	36±1.9	Reticulate+Sheet capillate	SG272	5O
<i>M. strigosa</i>	22±1.2	30.2±0.7	Reticulate+Sheet capillate	INA-BL48	6A–C
<i>M. strigosa</i>	–	–	Deformity+Reticulate	WYG190	6D
<i>M. khasiyana</i>	22.4±0.3	28.7±0.1	Reticulate+Sheet capillate	ZXL7194	6E, F
<i>M. herbacea</i>	20.6±0.1	30.85±1.5	Reticulate+Dense capillate	ZXL09793	6G, H
<i>M. calvescens</i>	31.1±1.3	44.4±1.5	Reticulate+Dense capillate	SG2857	6I
<i>M. trichocarpa</i>	23.2±0.4	32.3±0.1	Reticulate	YYH12042	6J
<i>M. trichocarpa</i>	–	–	Reticulate+Sheet capillate	YYH12370	6K
<i>M. trichosora</i>	27.6±2.4	40.4±3.1	Reticulate+Sheet capillate	WYD389	6L, M
<i>M. herbacea</i>	–	–	Deformity+Reticulate	ZXL09877	6N
<i>M. calvescens</i>	28.9±1.6	41.8±1.5	Reticulate+Dense capillate	ZXL09868	6O
<i>M. lofoushanensis</i>	26.6±1.2	41.5±0.7	Reticulate+Dense capillate	WYD641	7A, B
<i>M. lofoushanensis</i>	–	–	Reticulate+Dense capillate	YYH13676	7C
<i>M. lofoushanensis</i>	24.5±0.1	35.7±0.3	Reticulate+Dense capillate	WYD642	7D, E
<i>M. obtusiloba</i>	31±2.2	43.9±1.3	Reticulate+Dense capillate	WYD098	7F
<i>M. obtusiloba</i>	29.7±1.3	41.2±1.1	Reticulate+Dense capillate	SG2854	7G
<i>M. szechuanica</i>	28.4±1.8	39.8±1.6	Reticulate+Dense capillate	WYG056	7H
<i>M. szechuanica</i>	26.7±1.5	37.4±2.1	Reticulate	YYH13825	7I
<i>M. chrysocarpa</i>	23.8±0.1	32.7±1.4	Reticulate	WYG269	7J
<i>M. chrysocarpa</i>	22.3±0.1	30.4±1.4	Reticulate+Sheet capillate	WYG201	7K, L
<i>M. chrysocarpa</i>	23.8±0.7	32.4±0.5	Reticulate+Sheet capillate	WYG197	7M, N
<i>M. chrysocarpa</i>	25±1.8	33.2±1.2	Reticulate	WYG292	7O
<i>M. marginata</i>	26.5±1.6	36.9±2.2	Reticulate	YYH13692	8A
<i>M. marginata</i> var. <i>calvescens</i>	29.3±1.7	42±1.5	Reticulate+Sheet capillate	WYG006	8B
<i>M. marginata</i>	25.3±1.1	33±1.5	Reticulate	WYG185	8C
<i>M. marginata</i>	–	–	Deformity+Reticulate	WYG107	8D
<i>M. marginata</i> var. <i>villosa</i>	22.7±1.0	33.8±0.2	Reticulate+Sheet capillate	WYG203	8E, F
<i>M. marginata</i> var. <i>calvescens</i>	23.7±1.6	36.3±1.2	Reticulate+Sheet capillate	WYG194	8G
<i>M. marginata</i> var. <i>villosa</i>	26.6±0.5	40.2±2.0	Reticulate+Sheet capillate	WYG128	8H
<i>M. marginata</i>	30.2±3.2	41±2.1	Reticulate+Sheet capillate	WYG052	8I, J

<i>M. marginata</i>	28.2±1.5	37.5±0.9	Reticulate+Sheet capillate	WYG270	8K
<i>M. marginata</i> var. <i>villosa</i>	-	-	Reticulate	YYH12368	8L
<i>M. krameri</i>	-	-	Deformity+Reticulate	WYG231	8M
<i>M. marginata</i> var. <i>calvescens</i>	22.9±1.2	34.5±1.2	Reticulate+Sheet capillate	BJZ042	8N
<i>M. marginata</i> var. <i>bipinnata</i>	22.2±1.5	30.6±1.7	Reticulate+Sheet capillate	ZXL10149	8O
<i>M. marginata</i> var. <i>bipinnata</i>	-	-	Deformity+Reticulate	ZXL09979	9A
<i>M. marginata</i> var. <i>villosa</i>	-	-	Reticulate	YYH13356	9B
<i>M. marginata</i> var. <i>calvescens</i>	21.7±0.9	34.5±1.7	Reticulate+Sheet capillate	YYH13818	9C, D
<i>M. marginata</i>	29.6±2.7	40.6±4.9	Reticulate+Sheet capillate	WYG156	9E
<i>M. marginata</i> var. <i>bipinnata</i>	29.2±1.6	38.2±2.1	Reticulate+Sheet capillate	WYG293	9F
<i>M. marginata</i> var. <i>bipinnata</i>	-	-	Reticulate	WYG253	9G
<i>M. matthewii</i>	29.8±0.9	41.3±1.0	Reticulate+Dense capillate	YYH13164	9H, I
<i>M. marginata</i>	22.2±2.6	31.3±3.2	Reticulate	WYG232	9J
<i>M. trichocarpa</i>	29.8±1.6	42.9±2.3	Reticulate+Sheet capillate	WYD390	9K-M
<i>M. marginata</i>	20.8±0.1	36.6±1.6	Reticulate	SG250	9N
<i>M. marginata</i> var. <i>bipinnata</i>	30±0.1	39.1±0.1	Reticulate	SG356	9O

- 未测量数据
- represents no data

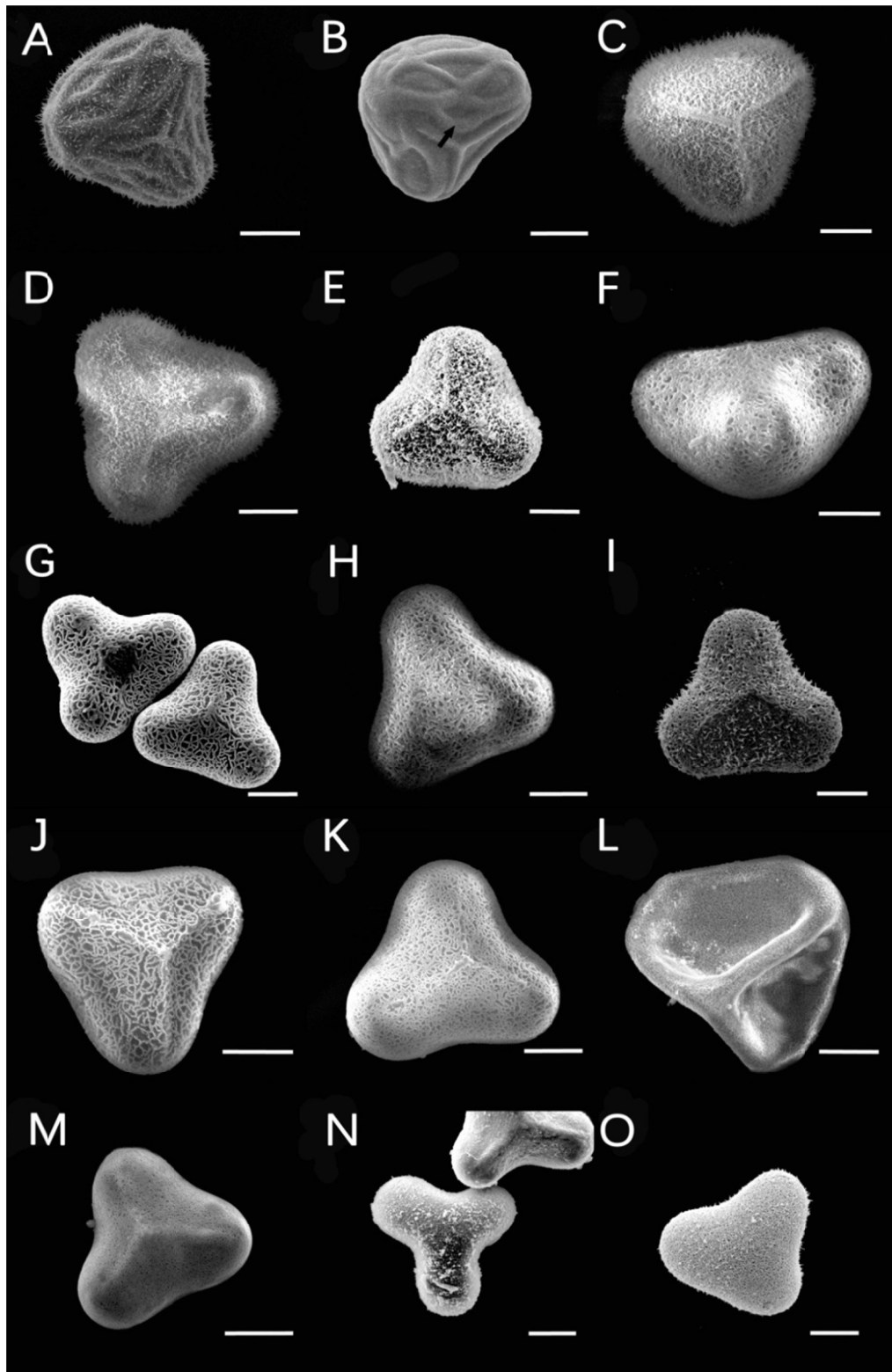


附图 1 基于 4 个叶绿体片段 *rbcL*、*trnL-F*、*psbA-trnH*、*rps4* 联合数据构建的贝叶斯系统发育树(包含 *rbcL* 假基因)

横线上的数字表示贝叶斯后验概率与 ML 自展支持率($\geq 50\%$), 红色方框内为包含 *rbcL* 假基因的样本

Appendix figure 1 BI phylogeny derived from the combined data (*rbcL*, *trnL-F*, *psbA-trnH* and *rps4*), included *rbcL* pseudogene

Values beside each branch represent bootstrap support for parsimony, Bayesian posterior probabilities and maximum likelihood ($\geq 50\%$). Samples of the red box included *rbcL* pseudogene

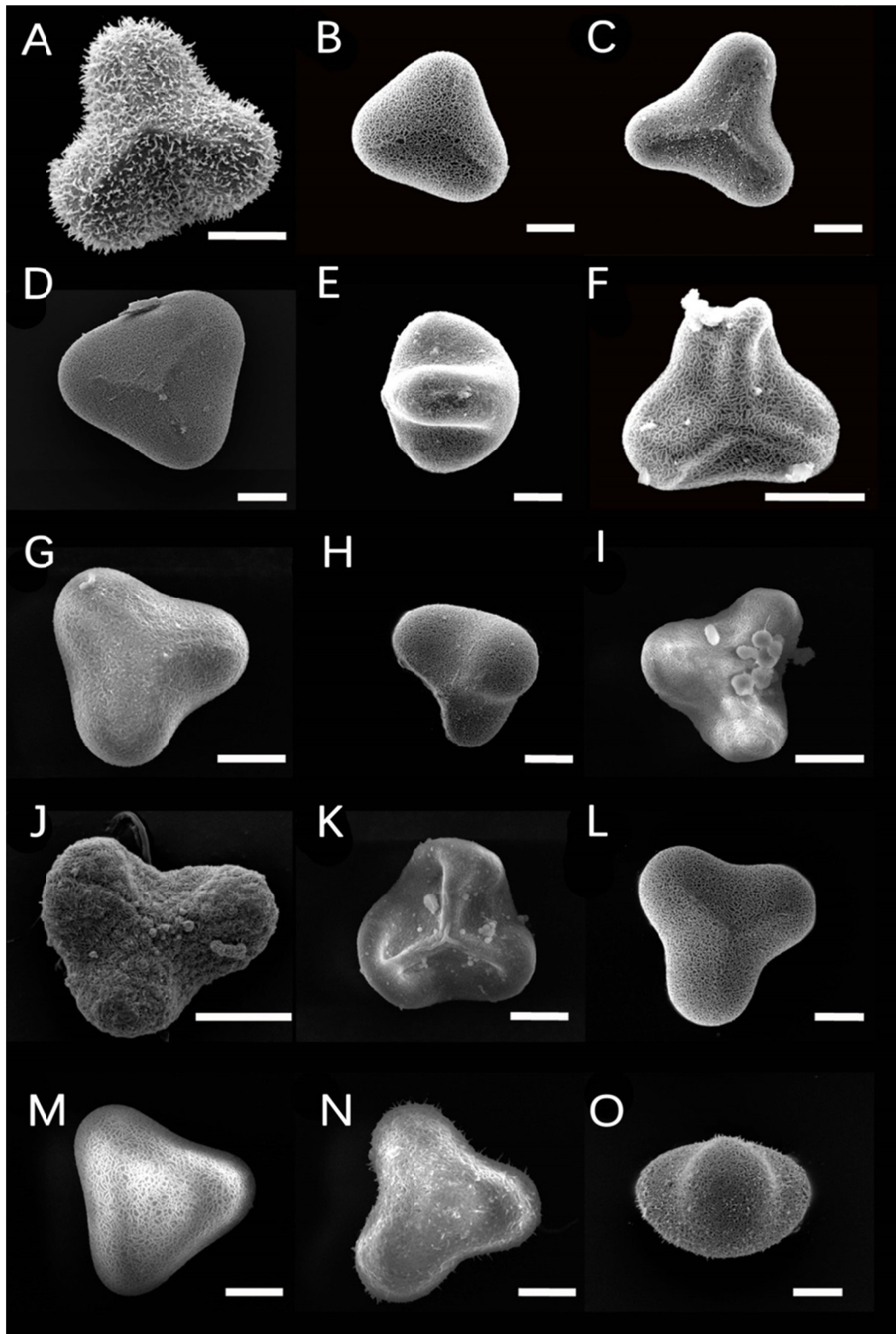


附图 2 扫描电镜下鳞盖蕨属植物孢子形态(Bar=10 μm)

(A), (B) 薄叶鳞盖蕨 SG1026; (C)–(E) 虎克鳞盖蕨 (C) WYG218; (D) WYG233; (E) SG1721; (F),(G) 滇西鳞盖蕨 (F) ZXL07067; (G) ZXL7016; (H)–(K) 热带鳞盖蕨 (H) WYD271; (I) ZXL09896; (J) WYG319; (K) WYG352; (L) 柔毛鳞盖蕨 YYH11625; (M), (N) 密毛鳞盖蕨 (M) YYH13056, (N) SG2632; (O) 乔大鳞盖蕨 INA-BL49

Appendix figure 2 Spores of *Microlepia* under SEM (Bar=10 μm)

(A), (B) *M. tenera* SG1026; (C)–(E) *M. hookeriana* (C) WYG218; (D) WYG233; (E) SG1721; (F),(G) *M. subspeluncae* (F) ZXL07067; (G) ZXL7016; (H)–(K) *M. speluncae* (H) WYD271; (I) ZXL09896; (J) WYG319; (K) WYG352; (L) *M. mollifolia* YYH11625; (M), (N) *M. villosa* (M) YYH13056; (N) SG2632; (O) *M. todayensis* INA-BL49

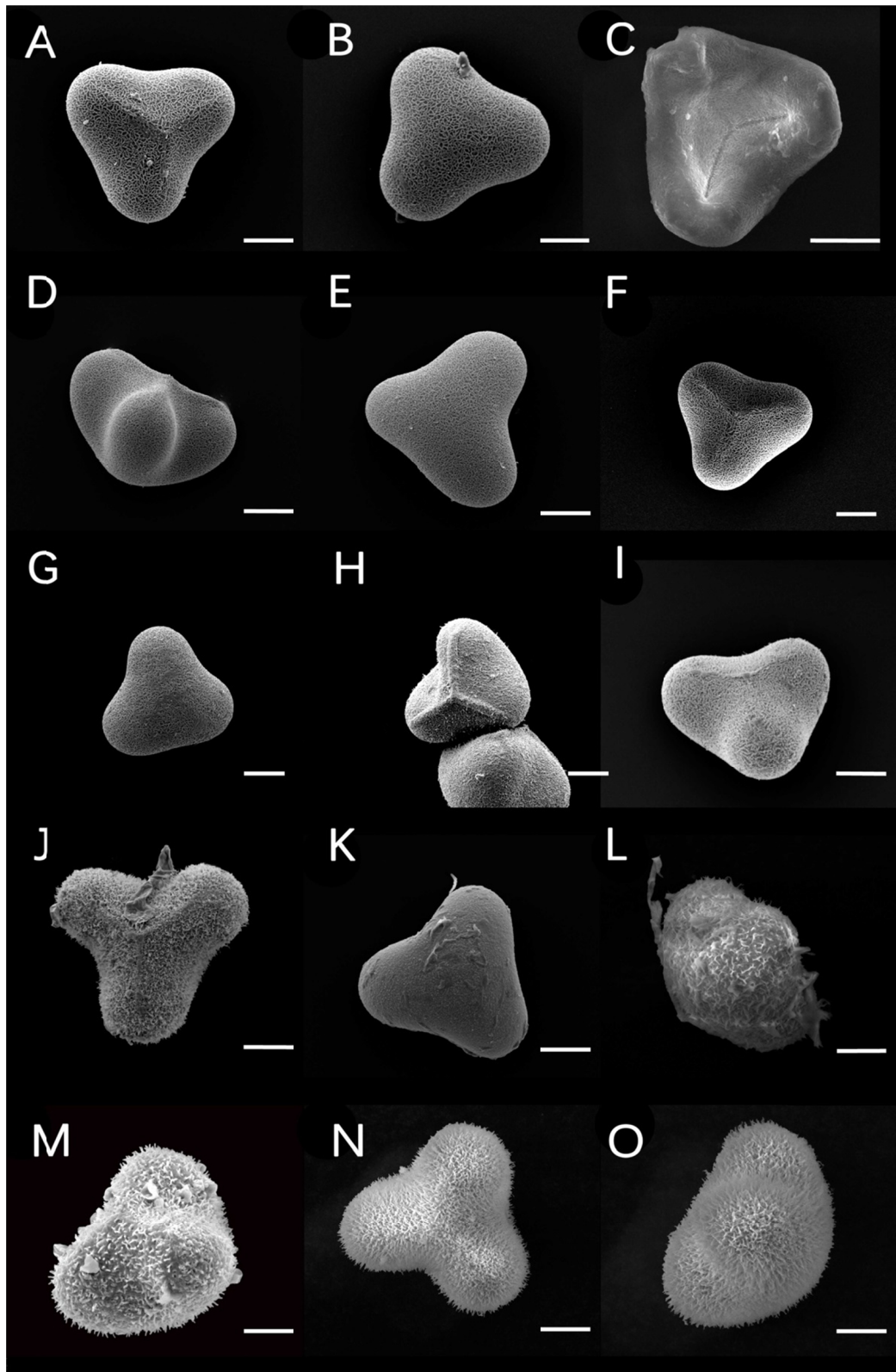


附图 3 扫描电镜下鳞盖蕨属植物孢子形态(Bar=10 μ m)

(A) 乔大鳞盖蕨 INA-BL44; (B) 马尼拉鳞盖蕨 SG1718; (C) 莱德氏鳞盖蕨 KNBL189; (D), (E), (I) 尖山鳞盖蕨 (D) XP618; (E) SG2837; (I) SG2806; (F), (G) 浅杯鳞盖蕨 (F) WZS003; (G) SG2830; (H) 华南鳞盖蕨 WYG320; (J) 克氏鳞盖蕨 YYH11607; (K) 岭南鳞盖蕨 SG288; (L), (O) 圆齿鳞盖蕨 (L) ZXL09872; (O) ZXL09873; (M), (N) 博罗鳞盖蕨 (M) WYD623; (N) WYD626

Appendix figure 3 Spores of *Microlepia* under SEM (Bar=10 μ m)

(A) *M. todayensis* INA-BL44; (B) *M. manilensis* SG1718; (C) *M. ridleyi* KNBL189; (D), (E), (I) *M. subtrichosticha* (D) XP618; (E) SG2837; (I) SG2806; (F), (G) *M. ampla* (F) WZS003; (G) SG2830; (H) *M. hancei* WYG320; (J) *M. krameri* YYH11607; (K) *M. matthewii* SG288; (L), (O) *M. crenata* (L) ZXL09872; (O) ZXL09873; (M), (N) *M. boluoensis* (M) WYD623; (N) WYD626

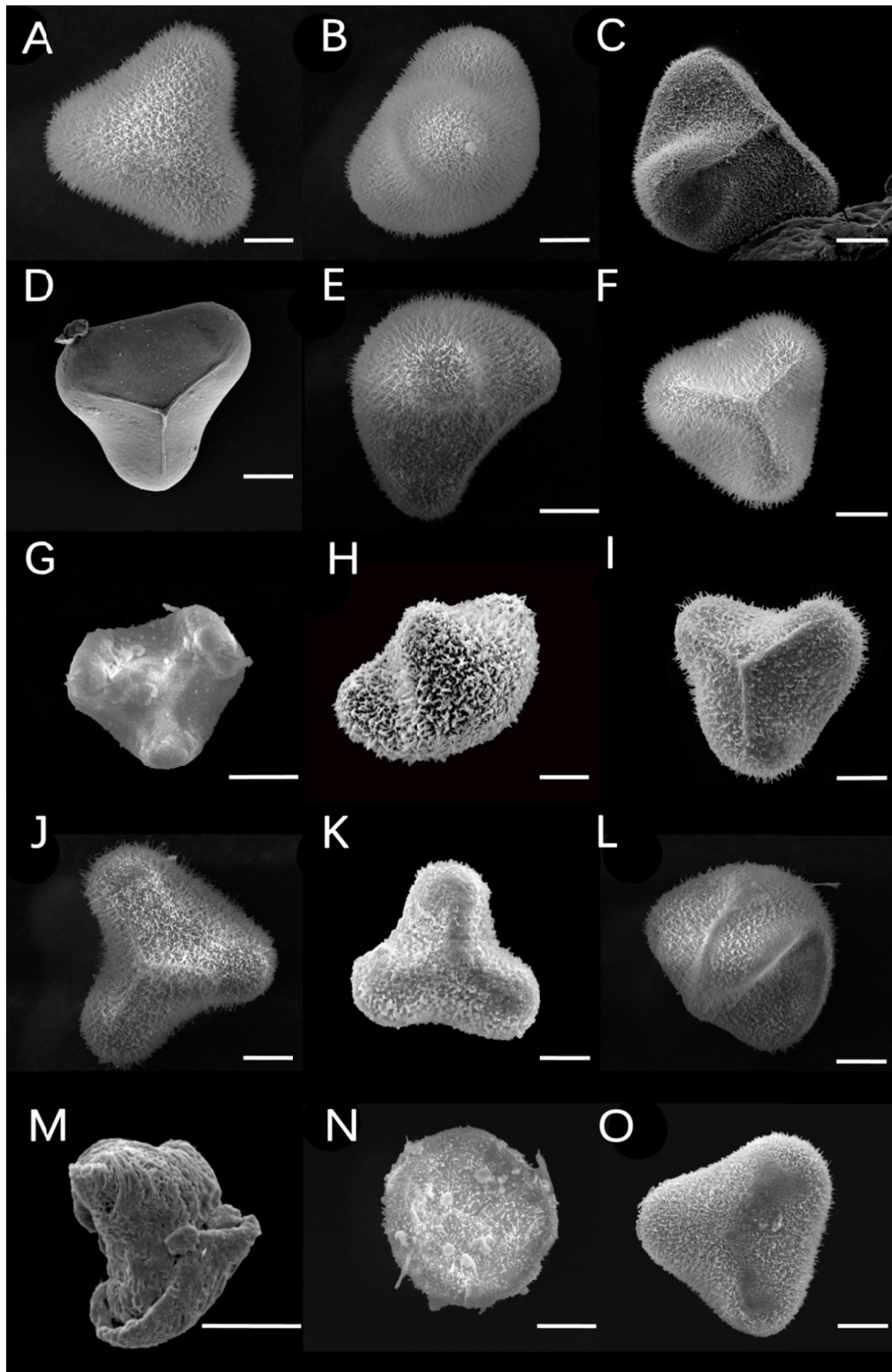


附图 4 扫描电镜下鳞盖蕨属植物孢子形态(Bar=10 μm)

(A), (B) 圆齿鳞盖蕨 (A) ZXL09779; (B) ZXL09794; (C) 岭南鳞盖蕨 YYH12410; (D)–(H) 华南鳞盖蕨 (D), (E) YYH13483; (F) JSL-TJ075; (G) WYD011; (H) YYH13703; (I)–(K) 阔叶鳞盖蕨 (I) YYH12394; (J), (K) YYH12366; (L), (M) 毛阔叶鳞盖蕨 (L) YYH12098; (M) SG1946; (N), (O) 长托鳞盖蕨 ZXL6882

Appendix figure 4 Spores of *Microlepia* under SEM (Bar=10 μm)

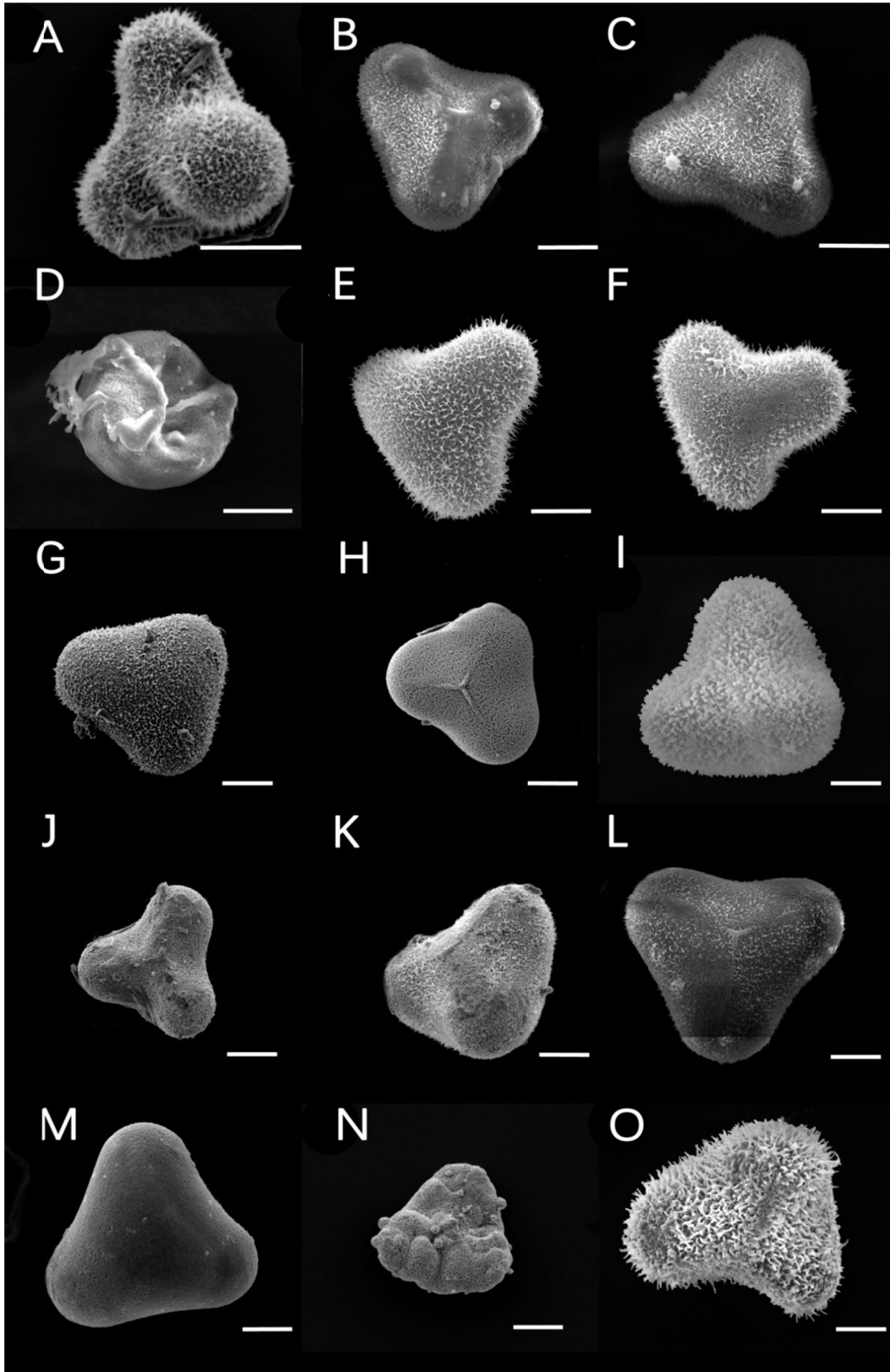
(A), (B) *M. crenata* (A) ZXL09779; (B) ZXL09794; (C) *M. matthewii* YYH12410; (D)–(H) *M. hancei* (D), (E) YYH13483; (F) JSL-TJ075; (G) WYD011; (H) YYH13703; (I)–(K) *M. platyphylla* (I) YYH12394; (J), (K) YYH12366; (L), (M) *M. kurzii* (L) YYH12098; (M) SG1946; (N), (O) *M. firma* ZXL6882



附图 5 扫描电镜下鳞盖蕨属植物孢子形态(Bar=10 μm)

(A)–(B) 长托鳞盖蕨 (A) ZXL6895; (B) ZXL5925; (C), (D) 瑶山鳞盖蕨 WYD303; (E)–(G) 云南鳞盖蕨 (E) ZXL7040; (F) YYH13109; (G) ZXL6988; (H)–(J) 斜方鳞盖蕨 (H) SG2641; (I) WZS004; (J) WYD529; (K), (L) 疏毛鳞盖蕨 (K) SG2624, (L) YYH12367; (M)–(O) 粗毛鳞盖蕨 (M) SG023; (N) WYG184; (O) SG272

Appendix figure 5 Spores of *Microlepia* under SEM (Bar=10 μm)
 (A)–(B) *M. firma* (A) ZXL6895; (B) ZXL5925; (C), (D) *M. yaoshanica* WYD303; (E)–(G) *M. yunnanensis* (E) ZXL7040; (F) YYH13109; (G) ZXL6988; (H)–(J) *M. rhomboidea* (H) SG2641; (I) WZS004; (J) WYD529; (K), (L) *M. communis* (K) SG2624; (L) YYH12367; (M)–(O) *M. strigosa* (M) SG023; (N) WYG184; (O) SG272

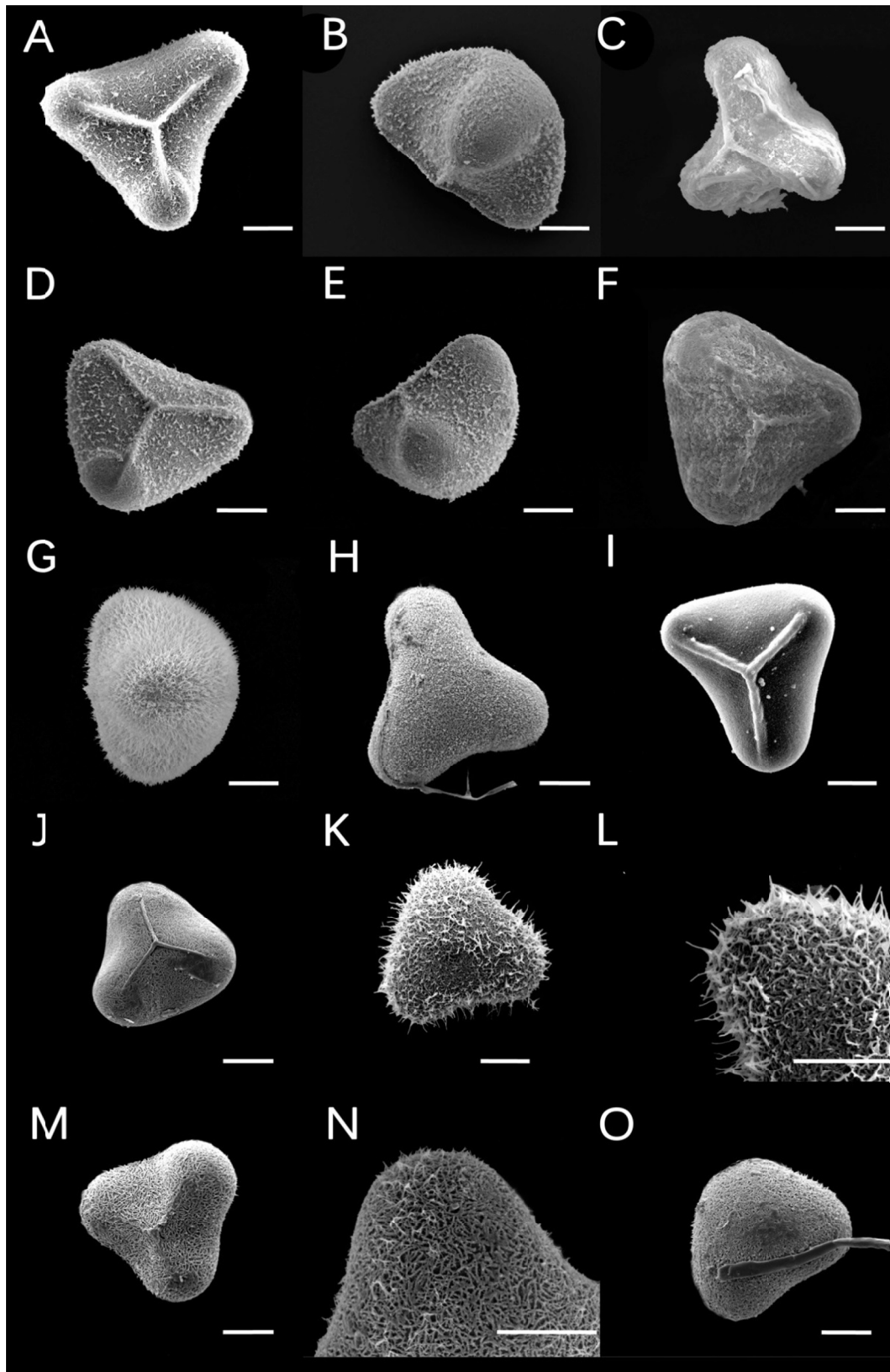


附图 6 扫描电镜下鳞盖蕨属植物孢子形态(Bar=10 μm)

(A)–(D) 粗毛鳞盖蕨: (A)–(C) INA-BL48; (D) WYG190; (E), (F) 西南鳞盖蕨 ZXL7194; (G), (H), (N) 草叶鳞盖蕨 (G), (H) ZXL09793; (N) ZXL09877; (I), (O) 光叶鳞盖蕨 (I) SG2857; (O) ZXL09868; (J), (K) 毛果鳞盖蕨 (J) YYH12042; (K) YYH12370; (L), (M) 毛囊鳞盖蕨 WYD389

Appendix figure 6 Spores of *Microlepia* under SEM (Bar=10 μm)

(A)–(D) *M. strigosa* (A)–(C) INA-BL48; (D) WYG190; (E), (F) *M. khasiyana* ZXL7194; (G), (H), (N) *M. herbacea* (G), (H) ZXL09793; (N) ZXL09877; (I), (O) *M. calvescens* (I) SG2857; (O) ZXL09868; (J), (K) *M. trichocarpa* (J) YYH12042; (K) YYH12370; (L), (M) *M. trichosora* WYD389

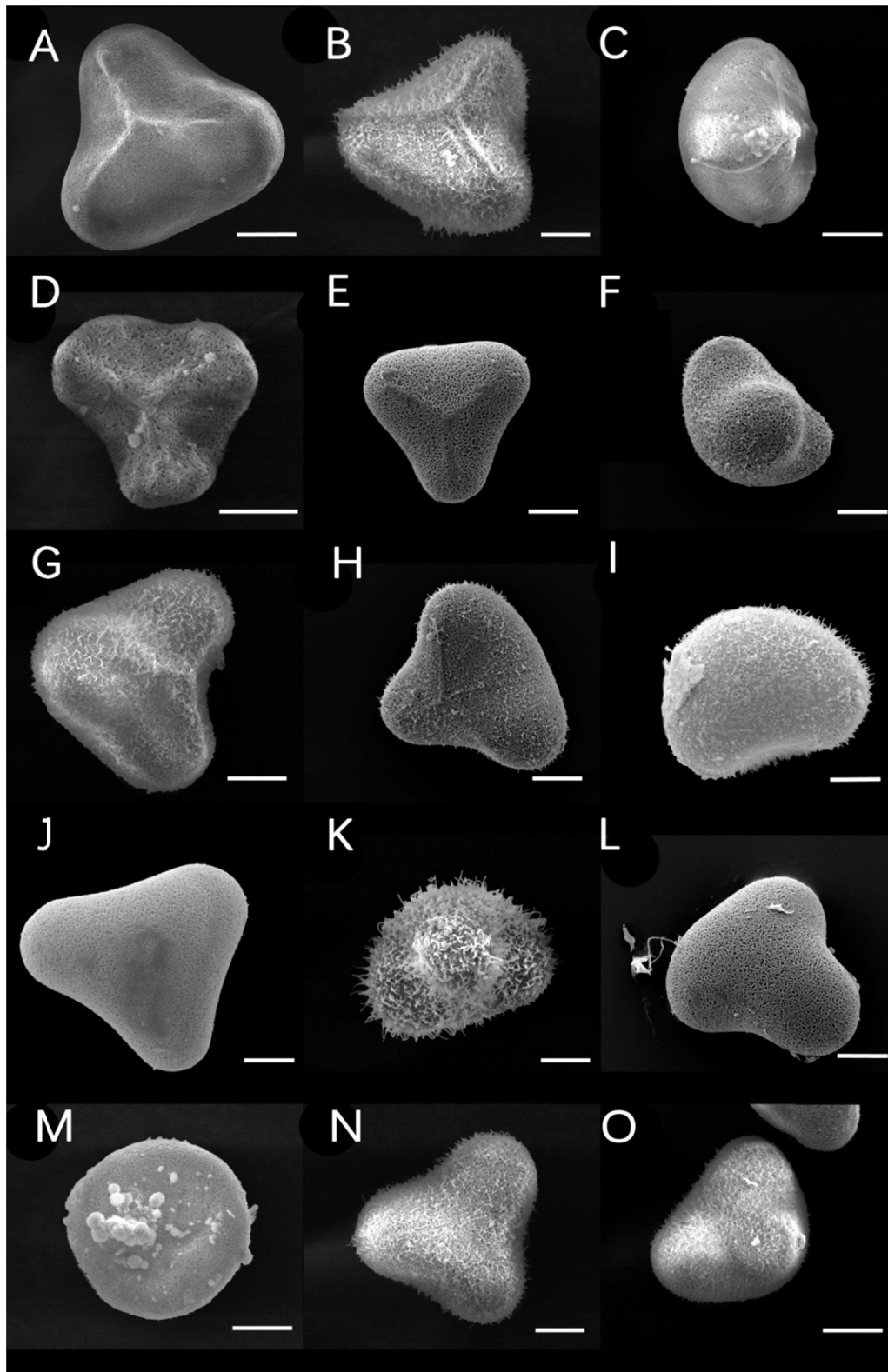


附图 7 扫描电镜下鳞盖蕨属植物孢子形态(Bar=10 μm)

(A)–(E) 罗浮鳞盖蕨 (A), (B) WYD641; (C) YYH13676; (D), (E) WYD642; (F), (G) 团羽鳞盖蕨 (F) WYD098; (G) SG2854; (H), (I) 四川鳞盖蕨 (H) WYG056; (I) YH13825; (J)–(O) 金果鳞盖蕨 (J) WYG269; (K), (L) WYG201; (M), (N) WYG197; (O) WYG292

Appendix figure 7 Spores of *Microlepidia* under SEM (Bar=10 μm)

(A)–(E) *M. lofoushanensis* (A), (B) WYD641; (C) YYH13676; (D), (E) WYD642; (F), (G) *M. obtusiloba* (F) WYD098; (G) SG2854; (H), (I) *M. szechuanica* (H) WYG056; (I) YH13825; (J)–(O) *M. chrysocarpa* (J) WYG269; (K), (L) WYG201; (M), (N) WYG197; (O) WYG292

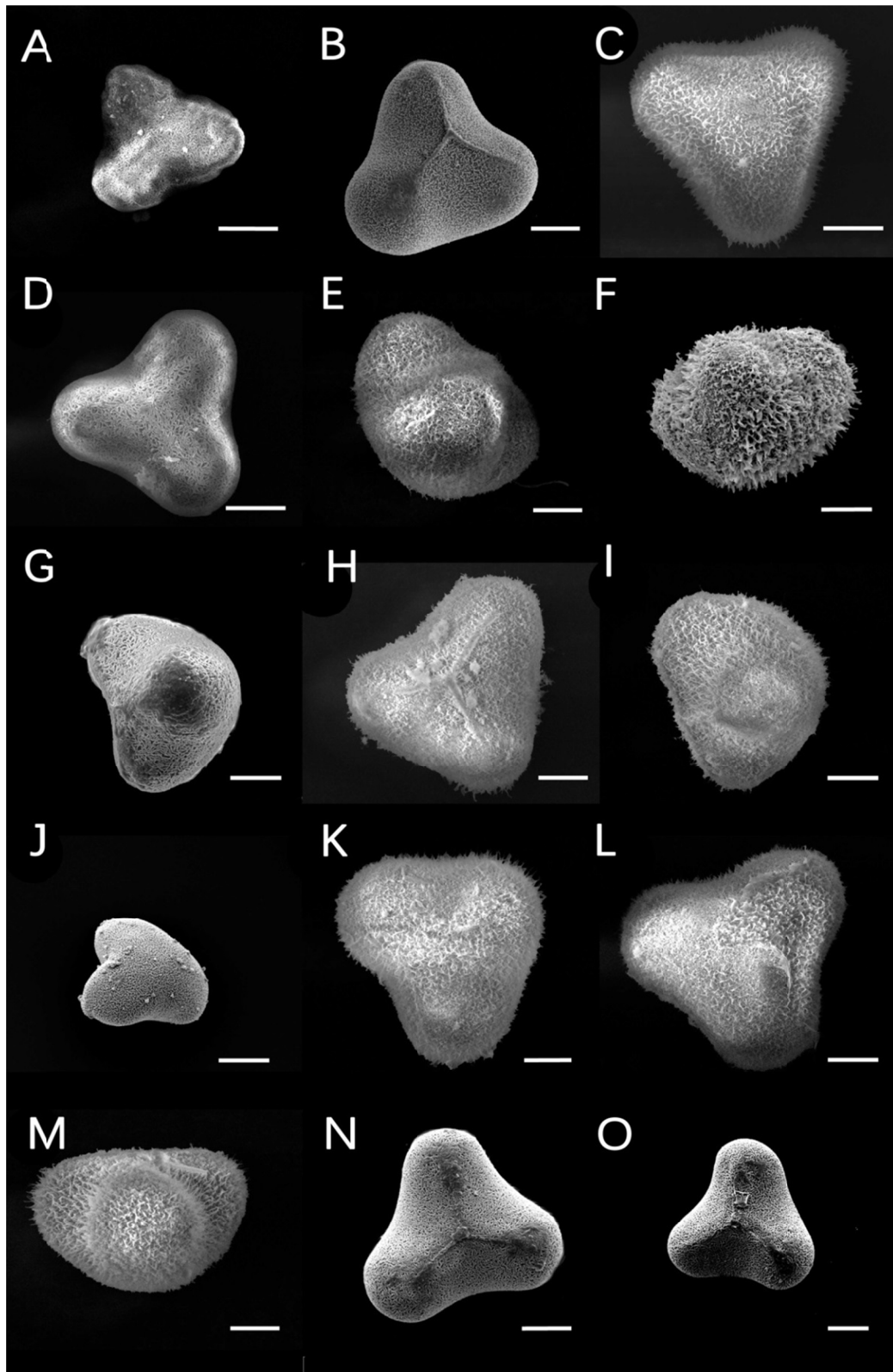


附图 8 扫描电镜下鳞盖蕨属植物孢子形态(Bar=10 μm)

(A)–(D), (I)–(K) 边缘鳞盖蕨 (A) YYH13692; (B) WYG006; (C) WYG185; (D) WYG107; (I), (J) WYG052; (K) WYG270; (E), (F), (H), (L) 毛叶边缘鳞盖蕨 (E), (F) WYG203; (H) WYG128; (L) YYH12368; (G), (N) 光叶鳞盖蕨 (G) WYG194, (N) BJZ042; (M) 克氏鳞盖蕨 WYG231; (O) 二回边缘鳞盖蕨 ZXL10149

Appendix figure 8 Spores of *Microlepia* under SEM (Bar=10 μm)

(A)–(D), (I)–(K) *M. marginata* (A) YYH13692; (B) WYG006; (C) WYG185; (D) WYG107; (I), (J) WYG052; (K) WYG270; (E), (F), (H), (L) *M. marginata* var. *villosa*; (E), (F) WYG203; (H) WYG128; (L) YYH12368; (G), (N) *M. marginata* var. *calvescens* (G) WYG194; (N) BJZ042; (M) *M. krameri* WYG231; (O) *M. marginata* var. *bipinnata* ZXL10149



附图 9 扫描电镜下鳞盖蕨属植物孢子形态(Bar=10 μm)

(A), (F), (G), (O) 二回边缘鳞盖蕨 (A) ZXL09979, (F) WYG293, (G) WYG253, (O) SG356; (B) 毛叶边缘鳞盖蕨 YYH13356; (C), (D) 光叶鳞盖蕨 YYH13818; (E), (J), (N) 边缘鳞盖蕨 (E) WYG156, (J) WYG232, (N) SG250; (H), (I) 岭南鳞盖蕨 YYH13164, (K)-(M) 毛果鳞盖蕨 WYD390

Appendix figure 9 Spores of *Microlepia* under SEM (Bar= 10 μm)

(A), (F), (G), (O) *M. marginata* var. *bipinnata* (A) ZXL09979; (F) WYG293; (G) WYG253; (O) SG356; *M. marginata* var. *villosa* YYH13356; (C), (D) *M. marginata* var. *calvescens* YYH13818; (E), (J), (N) *M. marginata* (E) WYG156; (J) WYG232; (N) SG250; (H), (I) *M. matthewii* YYH13164; (K)-(M) *M. trichocarpa* WYD390